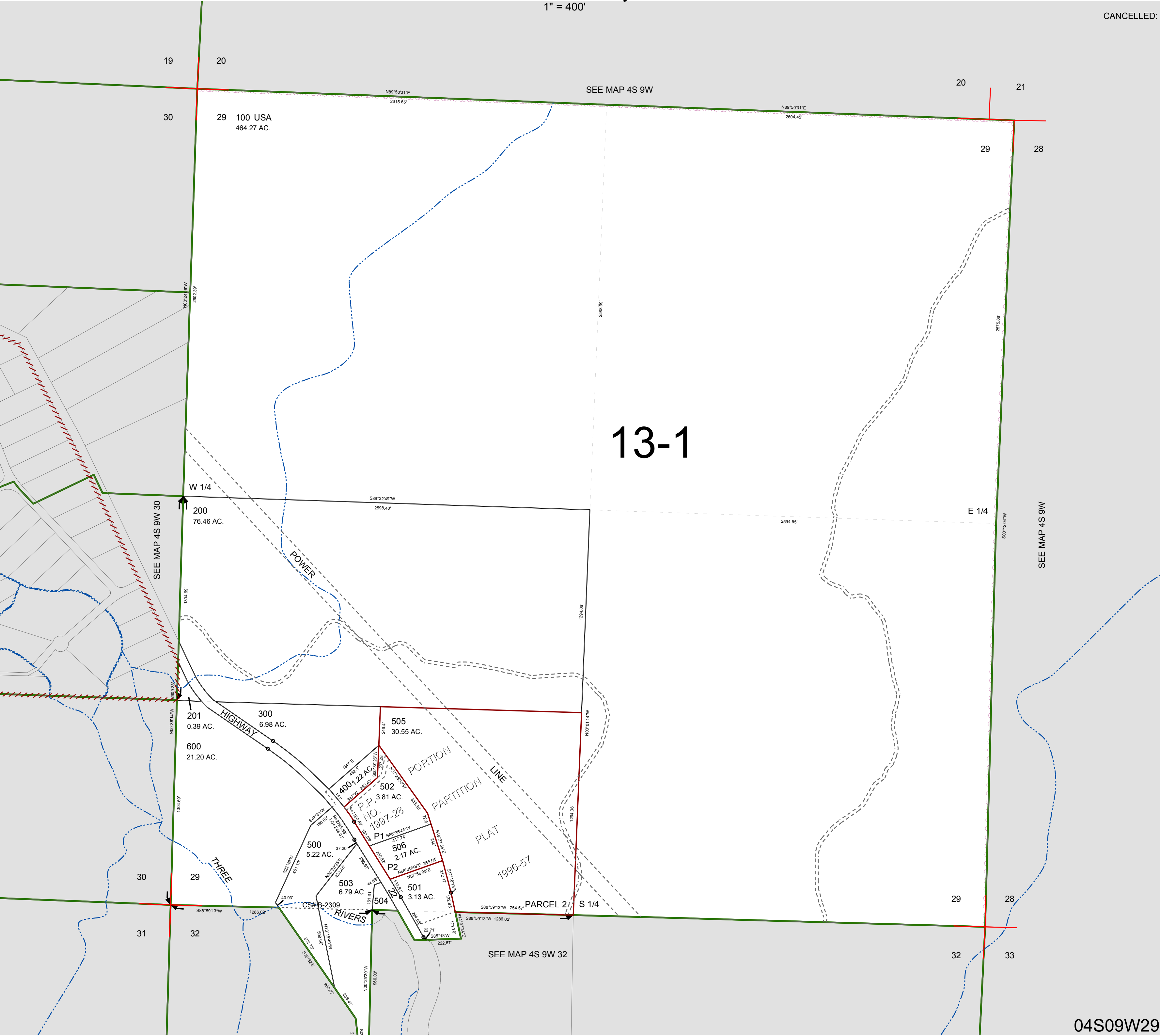


FOR ASSESSMENT AND TAXATION ONLY, NOT SUITABLE FOR
LEGAL, ENGINEERING, OR SURVEY PURPOSES

SECTION 29 T.4S. R.9W. W.M.
Tillamook County
1" = 400'

04S09W29

CANCELLED:



04S09W29

REVISED 6/16/17, WS