

FOR ASSESSMENT AND TAXATION ONLY. NOT SUITABLE FOR
LEGAL, ENGINEERING, OR SURVEY PURPOSES

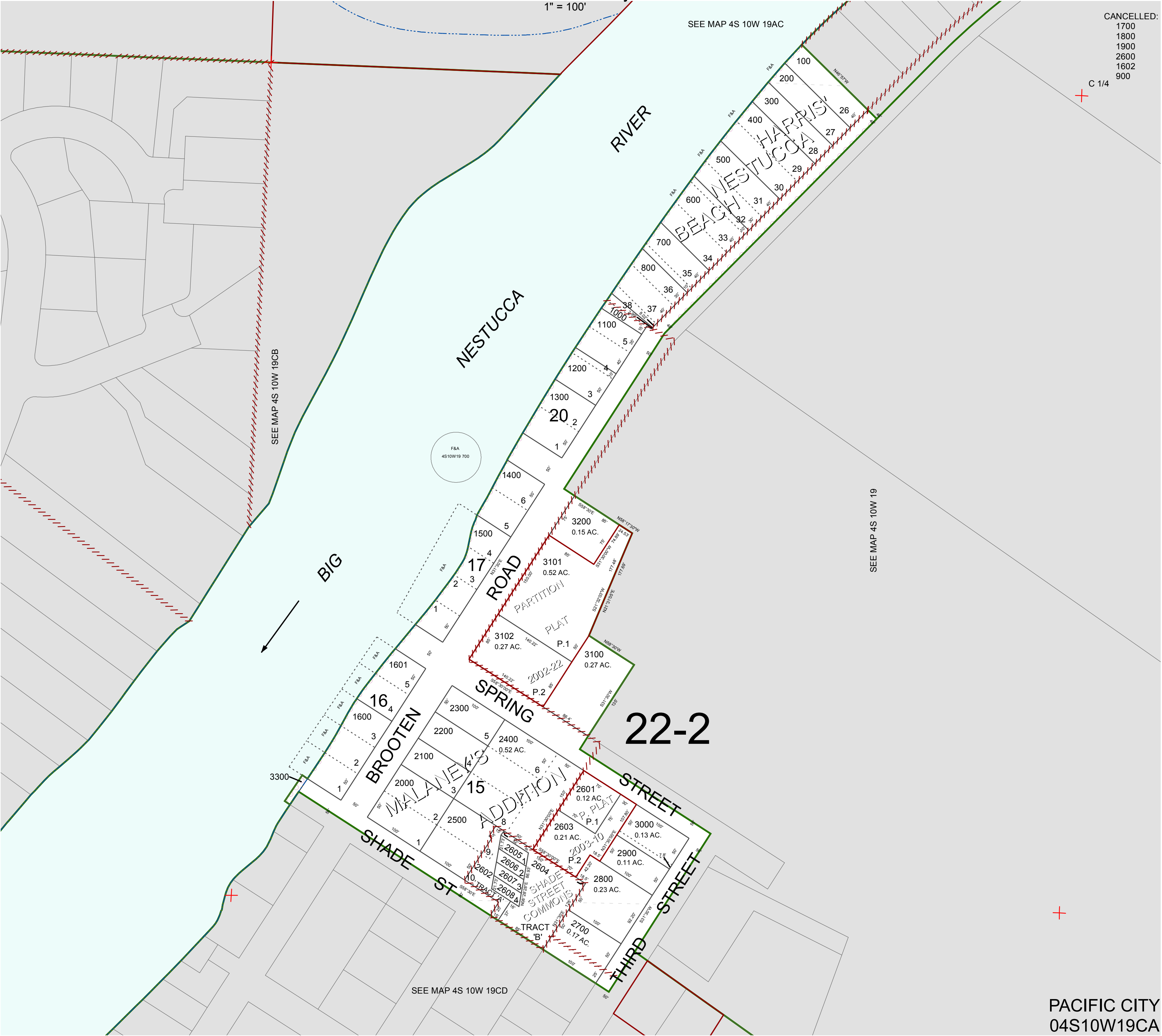
N.E.1/4 S.W.1/4 SEC.19 T.4S. R.10W. W.M.
Tillamook County

1" = 100'

04S10W19CA
PACIFIC CITY

CANCELLED:
1700
1800
1900
2600
1602
900

C 1/4



PACIFIC CITY
04S10W19CA
REVISED 3/2/14, WS