

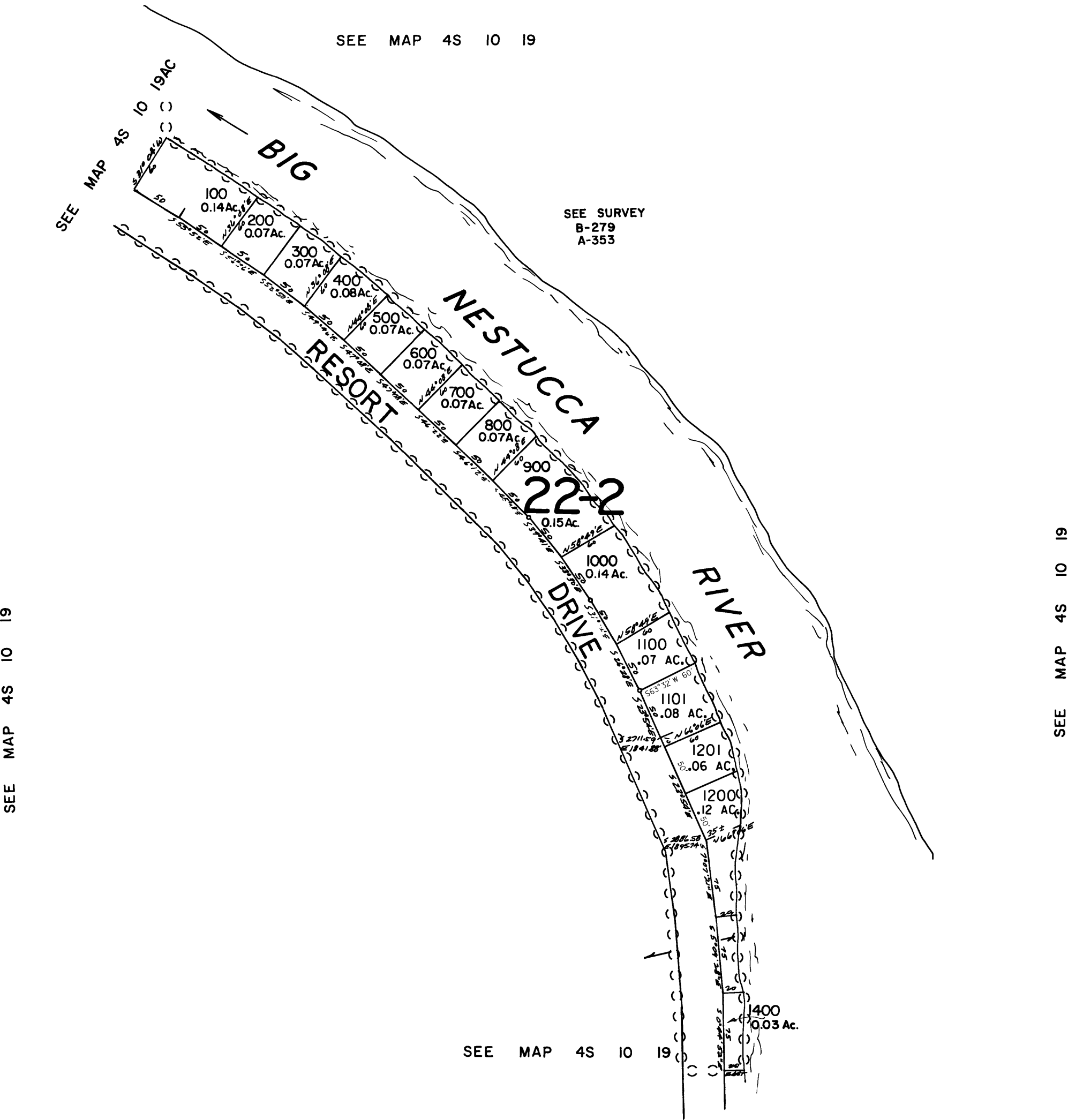
THIS MAP WAS PREPARED FOR
ASSESSMENT PURPOSE ONLY

SE1/4 NE1/4 SEC.19 T.4S. R.10W. W.M.
TILLAMOOK COUNTY

1" = 100'

4S 10 19AD

CANCELLED NO.
1300



4S 10 19AD

REVISED 12/07/07, WS