

FOR ASSESSMENT AND TAXATION ONLY, NOT SUITABLE FOR  
LEGAL, ENGINEERING, OR SURVEY PURPOSES

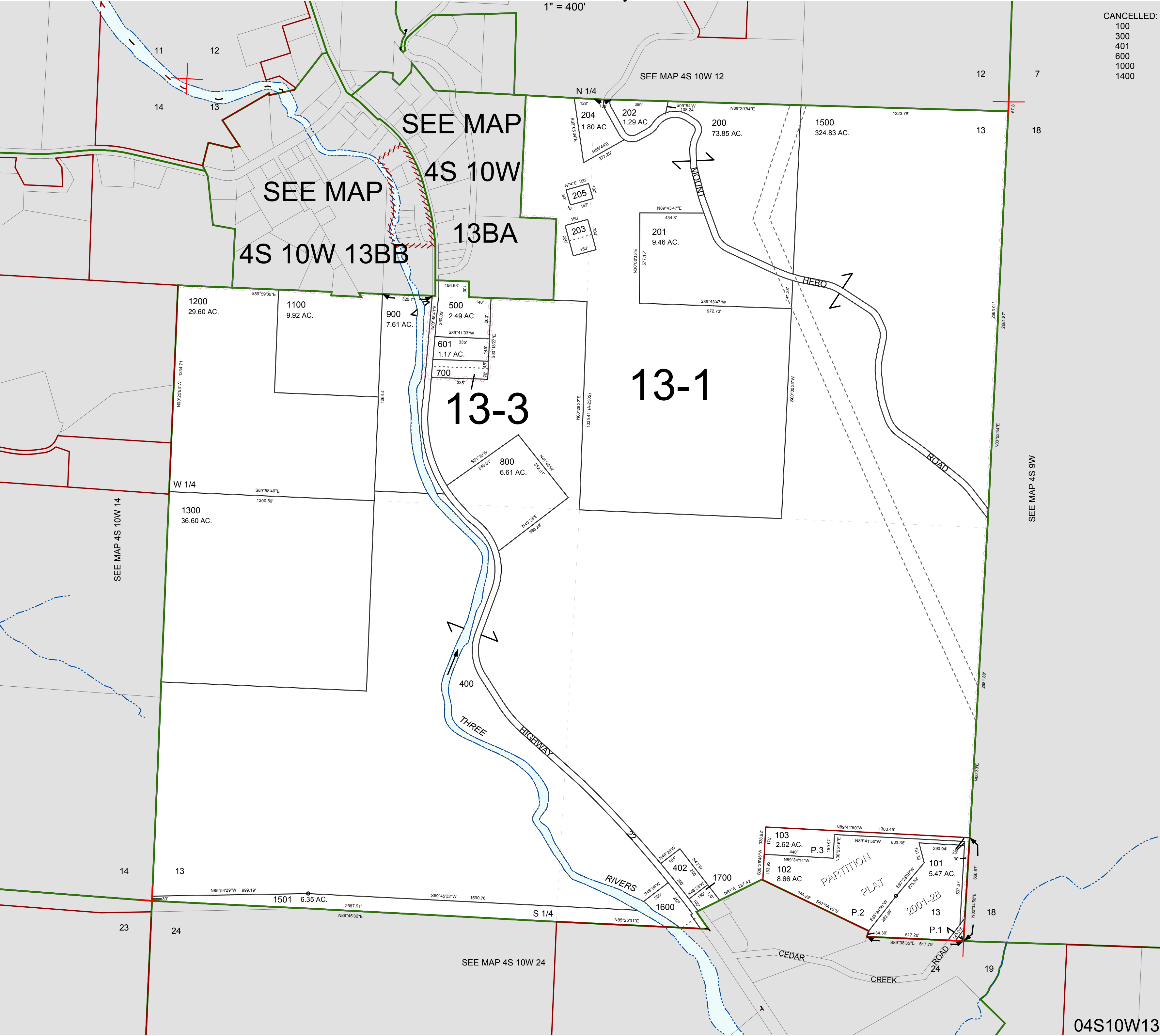
SECTION 13 T.4S. R.10W. W.M.

Tillamook County

1" = 400'

04S10W13

CANCELLED:  
100  
300  
401  
600  
1000  
1400



04S10W13

REVISED 6/16/17, WS