

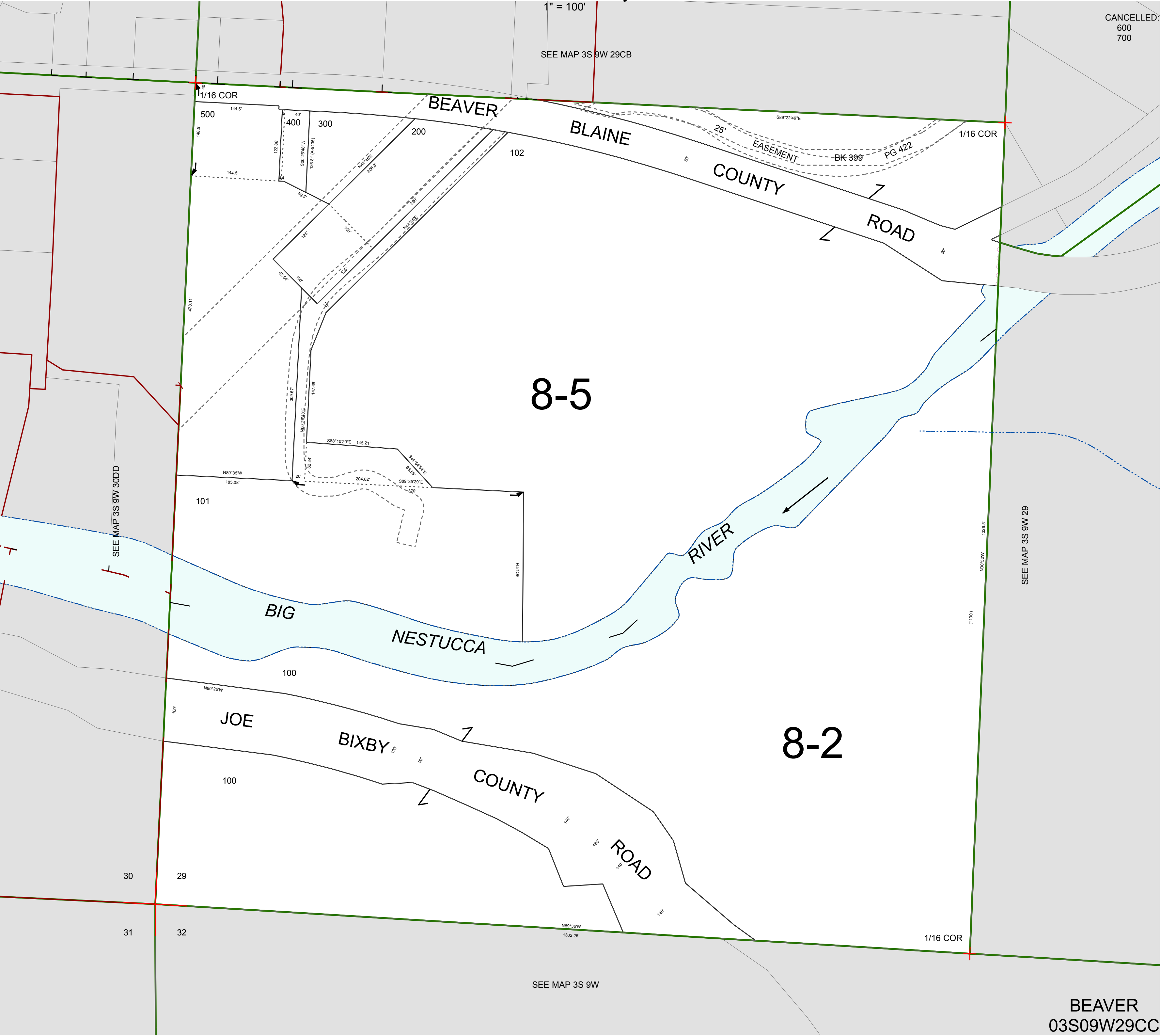
FOR ASSESSMENT AND TAXATION ONLY, NOT SUITABLE FOR  
LEGAL, ENGINEERING, OR SURVEY PURPOSES

S.W.1/4 S.W.1/4 SEC.29 T.3S. R.9W. W.M.  
Tillamook County

03S09W29CC  
BEAVER

CANCELLED:  
600  
700

1" = 100'  
SEE MAP 3S 9W 29CB



BEAVER  
03S09W29CC  
REVISED 6/16/17, WS