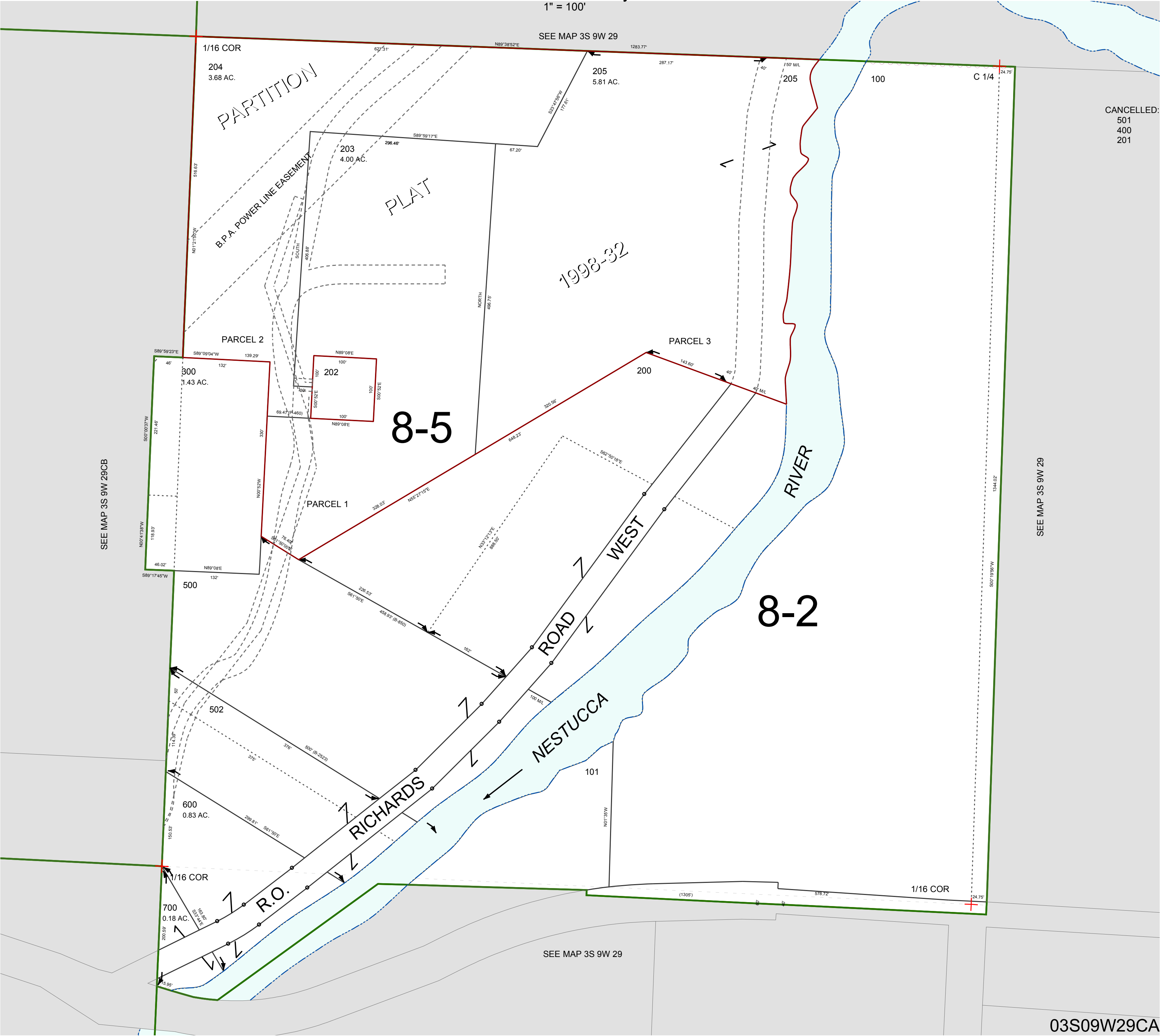


FOR ASSESSMENT AND TAXATION ONLY, NOT SUITABLE FOR
LEGAL, ENGINEERING, OR SURVEY PURPOSES

N.E.1/4 S.W.1/4 SEC.29 T.3S. R.9W. W.M.
Tillamook County

1" = 100'

03S09W29CA



CANCELLED:
501
400
201

03S09W29CA

REVISED 6/2/17, WS