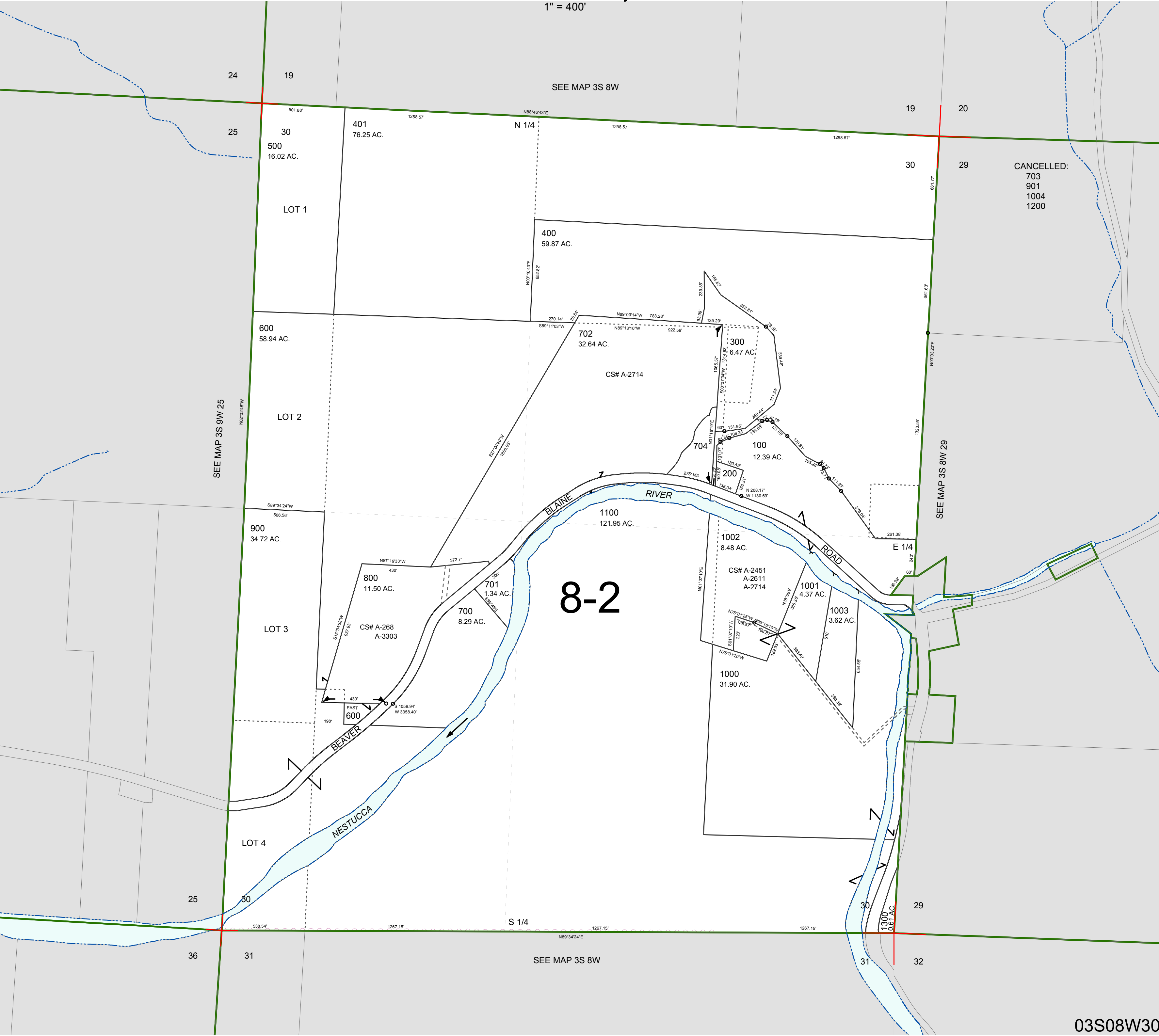


FOR ASSESSMENT AND TAXATION ONLY, NOT SUITABLE FOR  
LEGAL, ENGINEERING, OR SURVEY PURPOSES

SECTION 30 T.3S. R.8W. W.M.  
Tillamook County

$$1'' = 400'$$

03S08W30

03S08W30  
REVISED 6/16/17, WS