

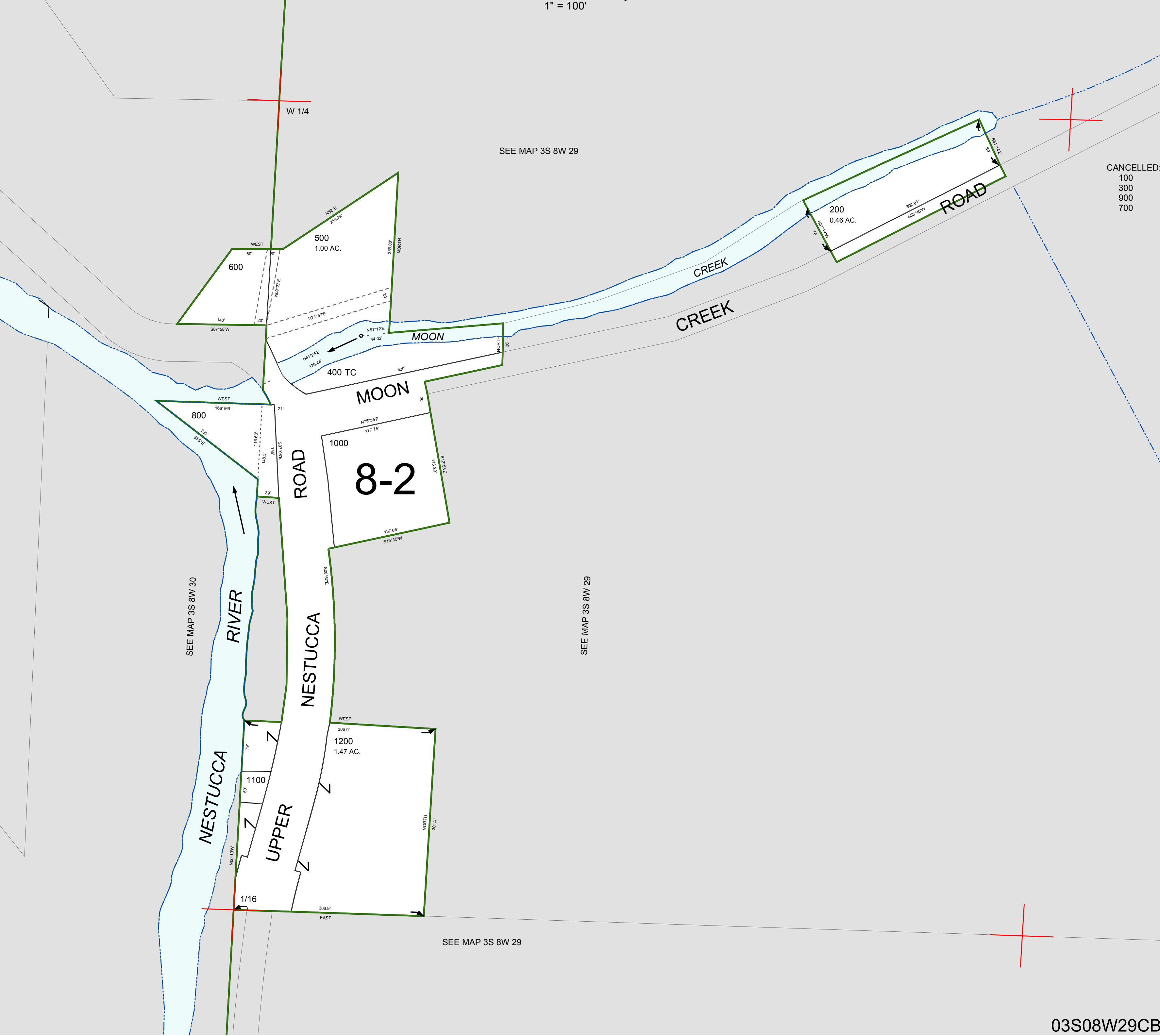
FOR ASSESSMENT AND TAXATION ONLY, NOT SUITABLE FOR
LEGAL, ENGINEERING, OR SURVEY PURPOSES

N.W.1/4 S.W.1/4 SEC.29 T.3S. R.8W. W.M.

Tillamook County

$$1'' = 100'$$

03S08W29CB



CANCELLED:
100

00

00
0000
00

00

03S08W29CB

REVISÉD 6/16/17, WS