

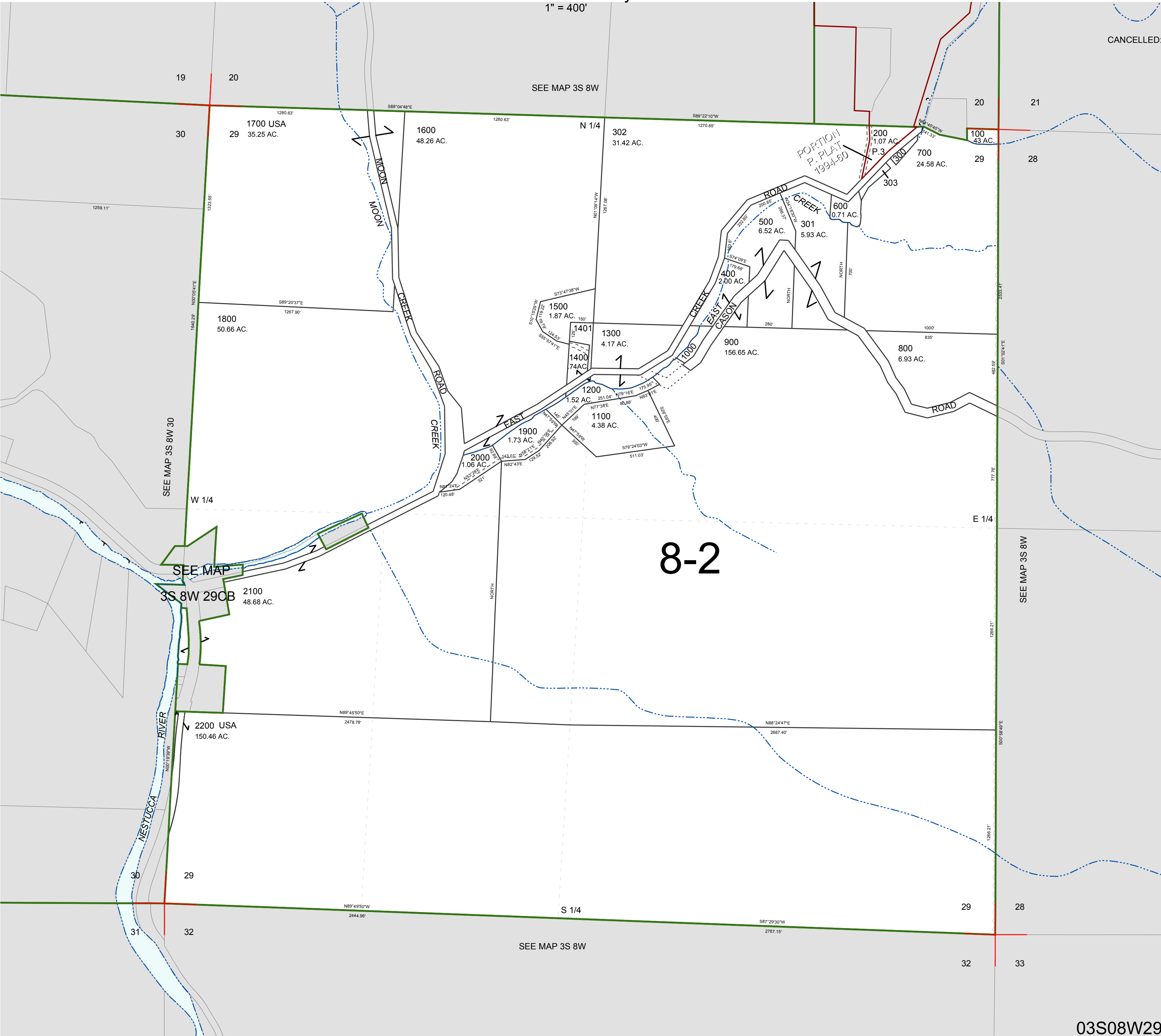
FOR ASSESSMENT AND TAXATION ONLY, NOT SUITABLE FOR
LEGAL, ENGINEERING, OR SURVEY PURPOSES

SECTION 29 T.3S. R.8W. W.M.
Tillamook County

$$1'' = 400'$$

03S08W29

ANCELLED:



03S08W29

REVISED 6/16/17, WS