

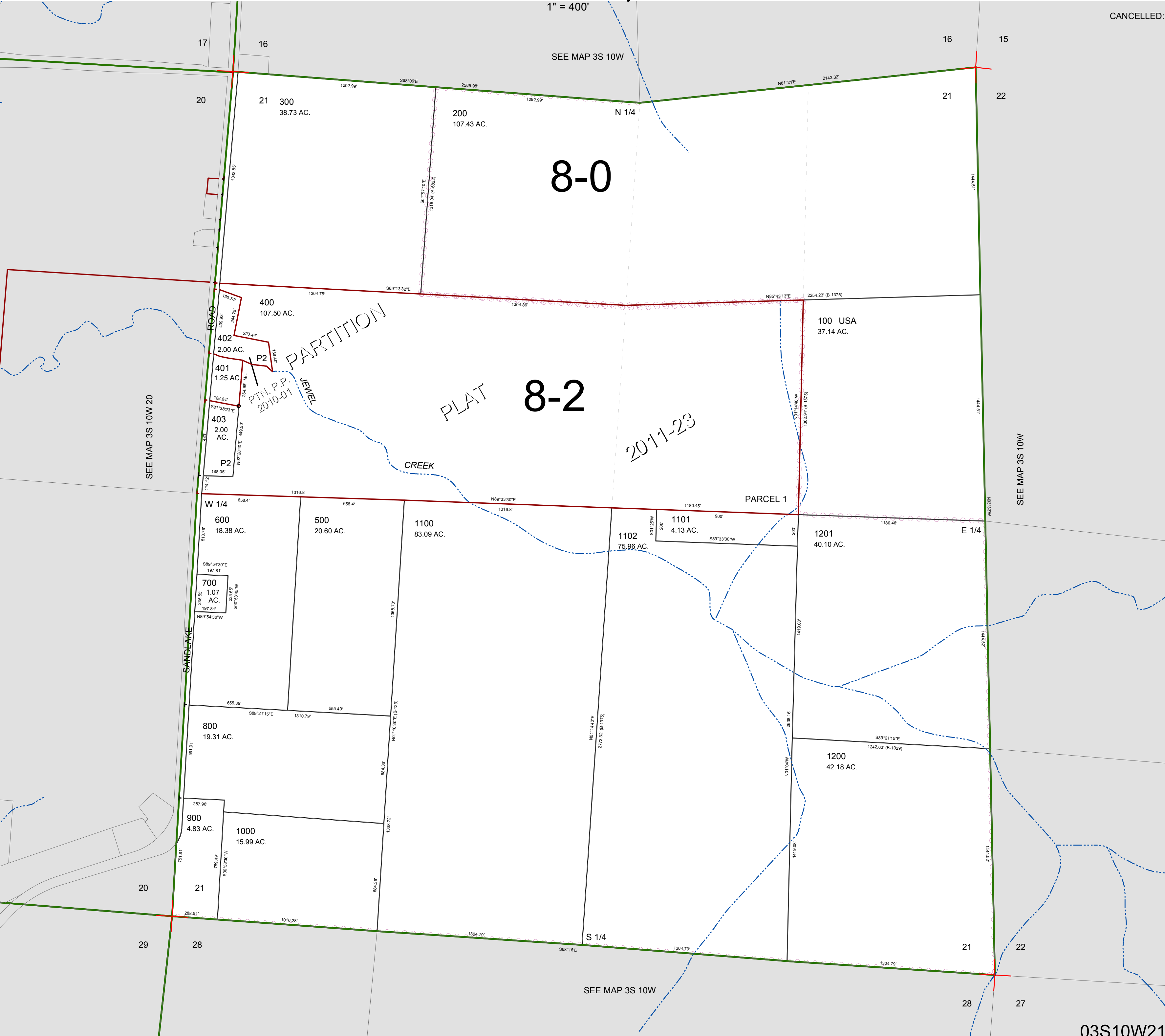
FOR ASSESSMENT AND TAXATION ONLY, NOT SUITABLE FOR  
LEGAL, ENGINEERING, OR SURVEY PURPOSES

SECTION 21 T.3S. R.10W. W.M.  
Tillamook County

$$1'' = 400'$$

03S10W21

CANCELLED:



03S10W21

REVISED 6/16/17, WS