

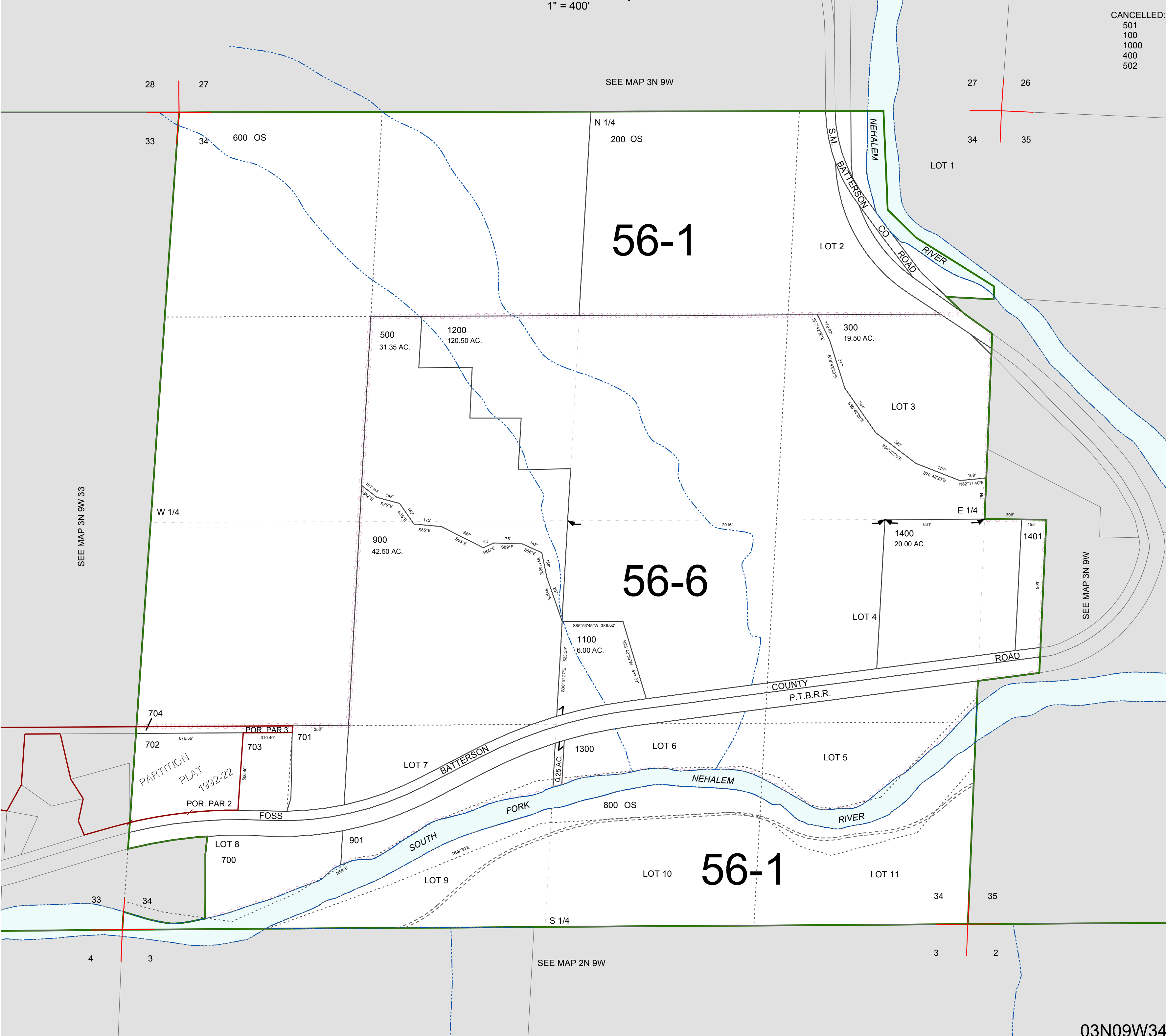
FOR ASSESSMENT AND TAXATION ONLY, NOT SUITABLE FOR
LEGAL, ENGINEERING, OR SURVEY PURPOSES

SECTION 34 T.3N. R.9W. W.M.
Tillamook County
1" = 400'

03N09W34

ANCELLED:

- 501
- 100
- 1000
- 400
- 502



03N09W34
REVISED 7/10/15, WS