

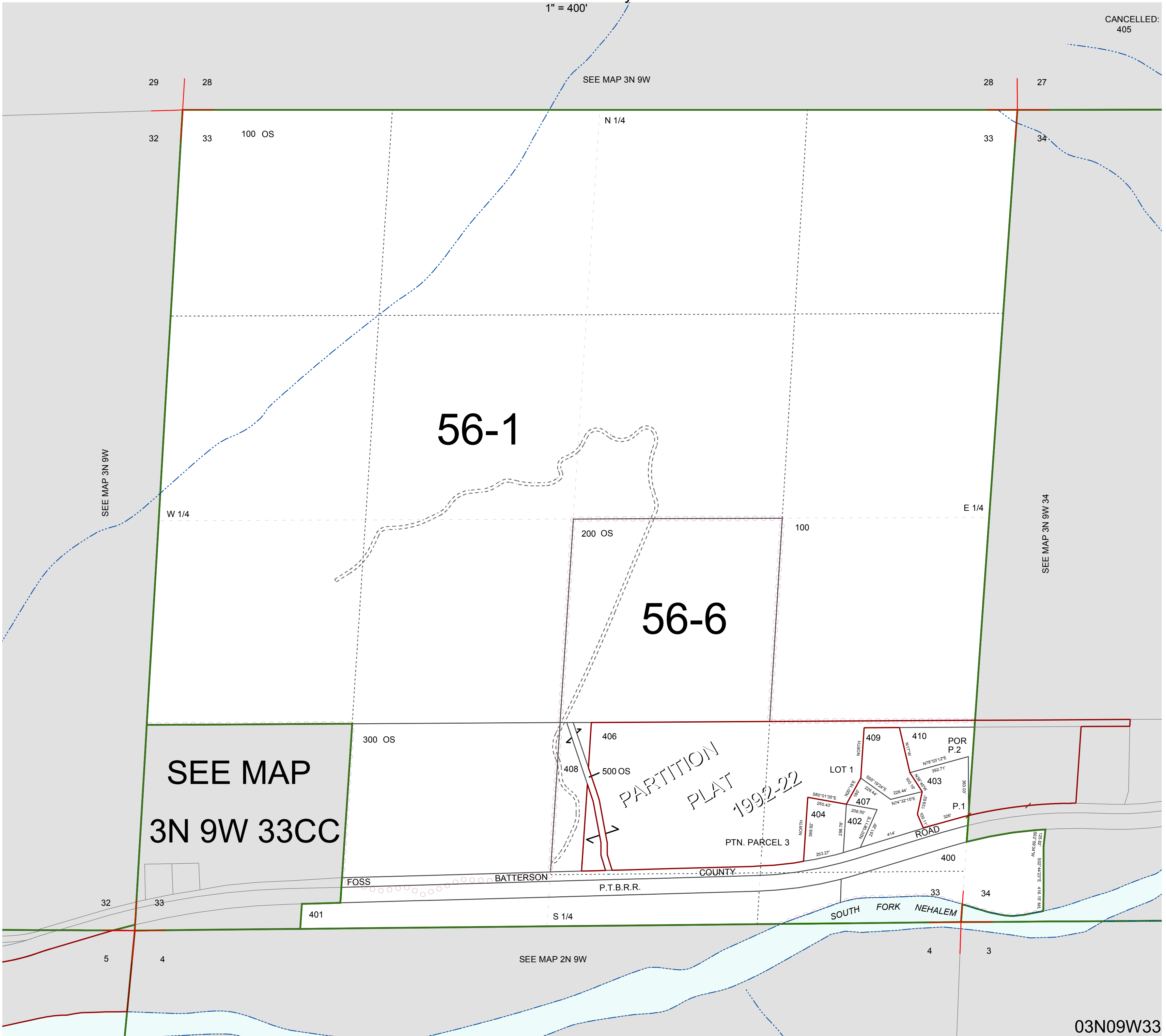
FOR ASSESSMENT AND TAXATION ONLY, NOT SUITABLE FOR  
LEGAL, ENGINEERING, OR SURVEY PURPOSES

SECTION 33 T.3N. R.9W. W.M.  
Tillamook County

$$1'' = 400'$$

03N09W33

CANCELLED:  
405



03N09W33

REVISED 7/10/15, WS