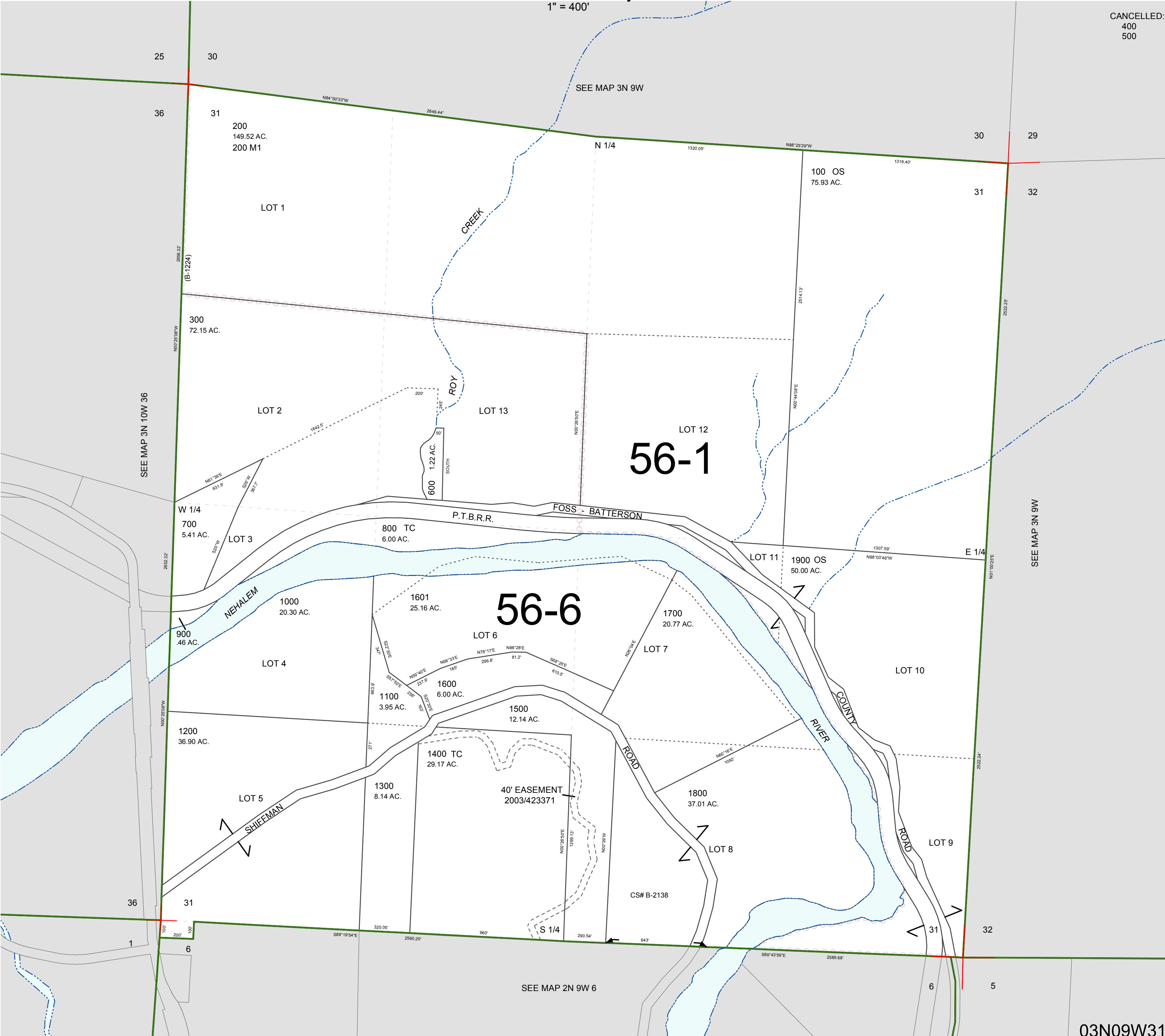


FOR ASSESSMENT AND TAXATION ONLY, NOT SUITABLE FOR
LEGAL, ENGINEERING, OR SURVEY PURPOSES

SECTION 31 T.3N. R.9W. W.M.
Tillamook County
1" = 400'

03N09W31

CANCELLED:
400
500



03N09W31
REVISED 6/05/15, WS