

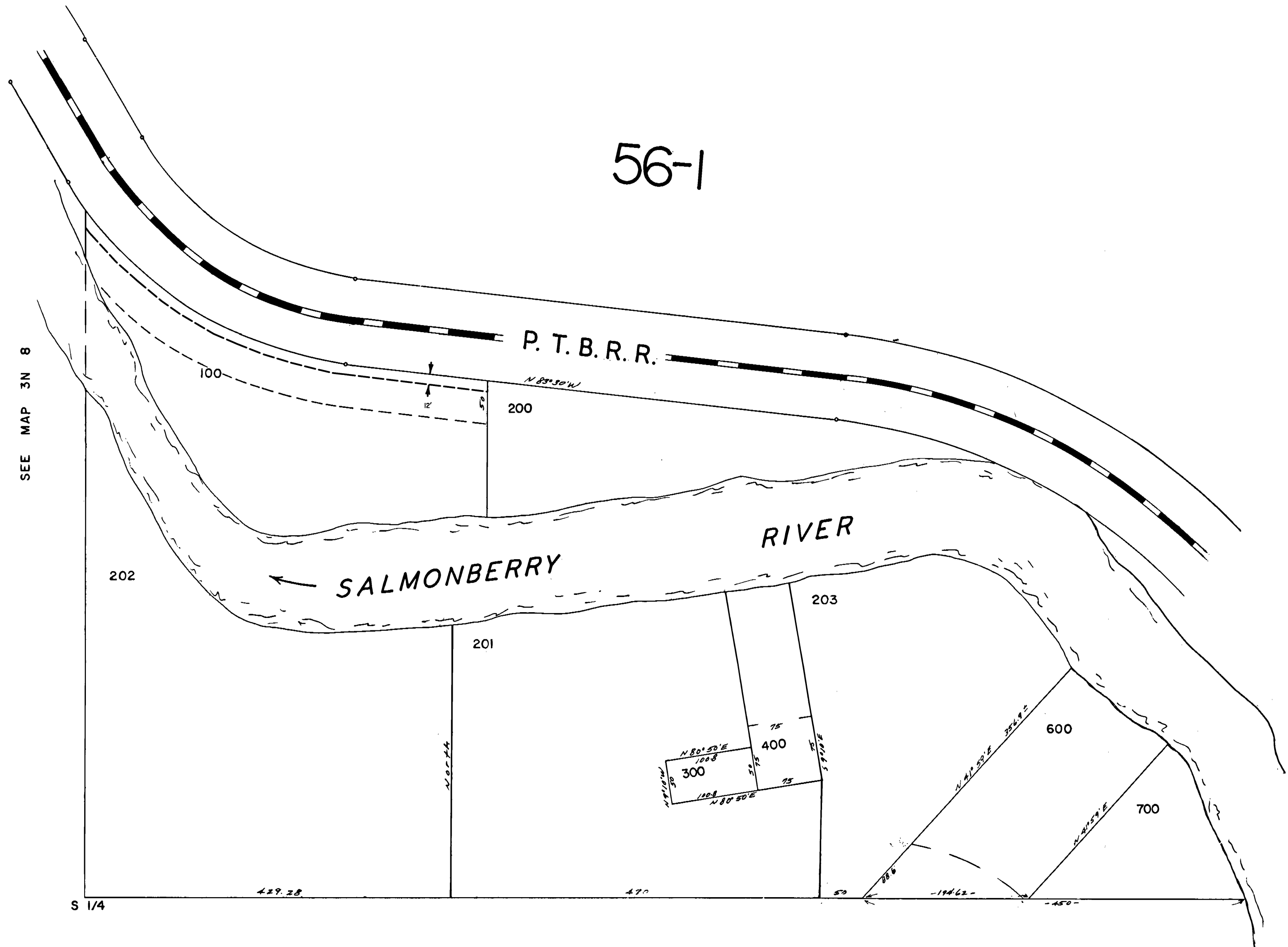
THIS MAP WAS PREPARED FOR
ASSESSMENT PURPOSE ONLY

SW1/4 SE1/4 SEC.10 T.3N. R.8W. W.M.
TILLAMOOK COUNTY
1" = 100'

3N 08 10DC

CANCELLED NO.
101
500

SEE MAP 3N 8



SEE MAP 3N 8

3N 08 10DC

REVISED 10/09/00, KA