

THIS MAP WAS PREPARED FOR
ASSESSMENT PURPOSE ONLY

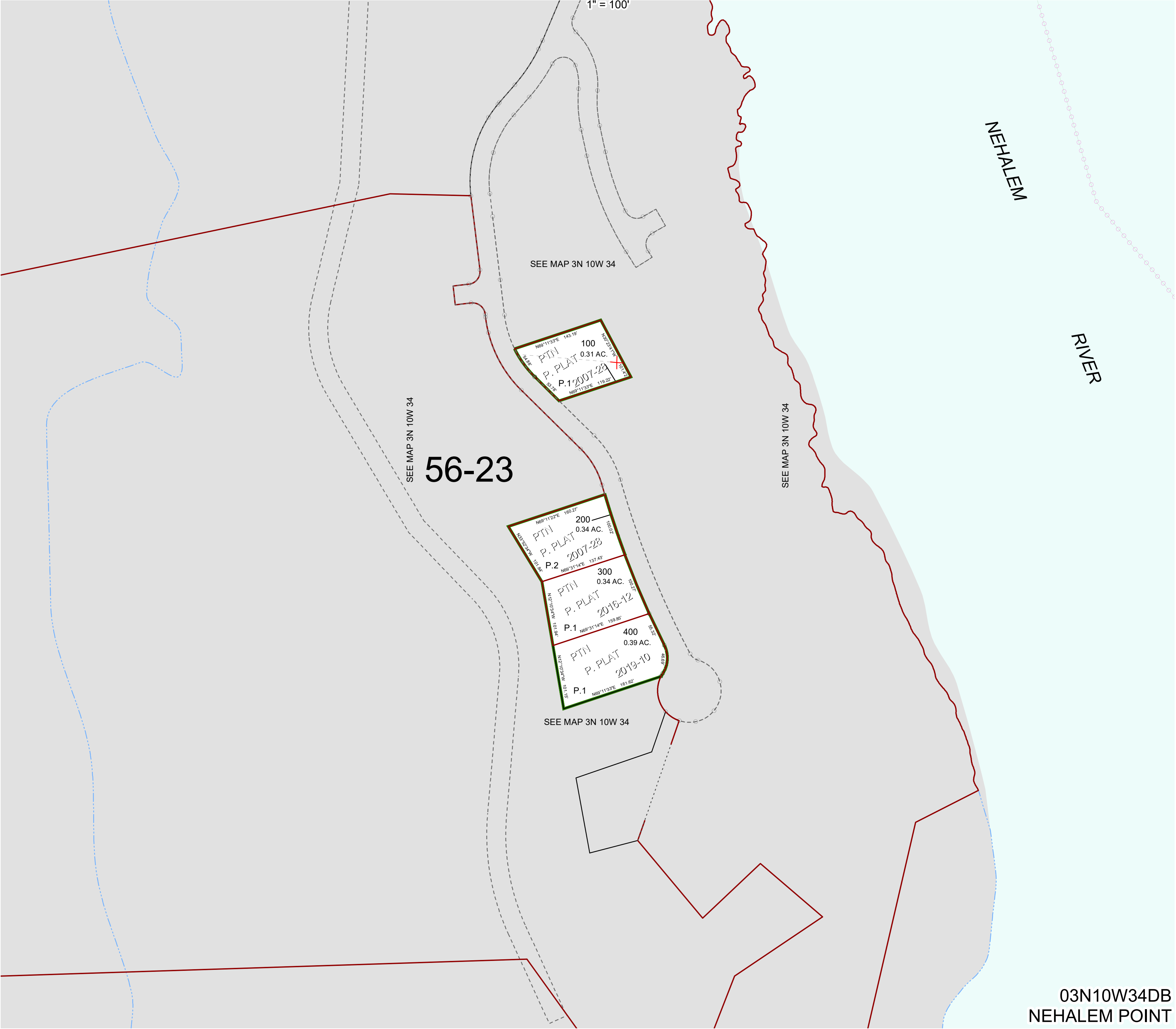
0 50 100 150 200 Feet

N.W.1/4 S.E.1/4 SEC.34 T.3N. R.10W. W.M.

TILLAMOOK COUNTY

03N10W34DB
NEHALEM POINT

1" = 100'



03N10W34DB
NEHALEM POINT