

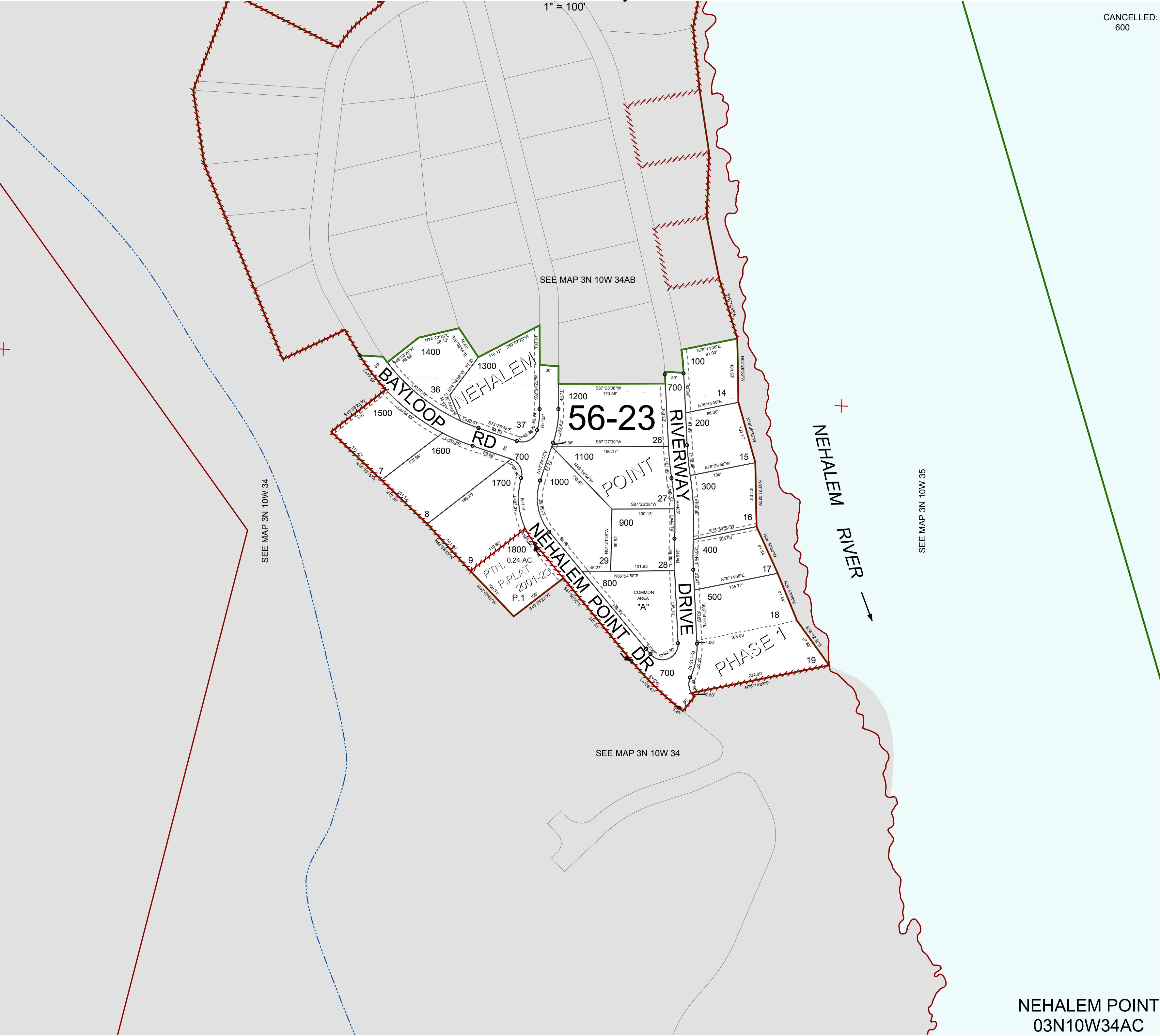
FOR ASSESSMENT AND TAXATION ONLY, NOT SUITABLE FOR
LEGAL, ENGINEERING, OR SURVEY PURPOSES

S.W.1/4 N.E.1/4 SEC.34 T.3N. R.10W. W.M.
Tillamook County

03N10W34AC
NEHALEM POINT

CANCELLED:
600

1" = 100'



NEHALEM POINT
03N10W34AC

REVISED 8/29/17, WS