

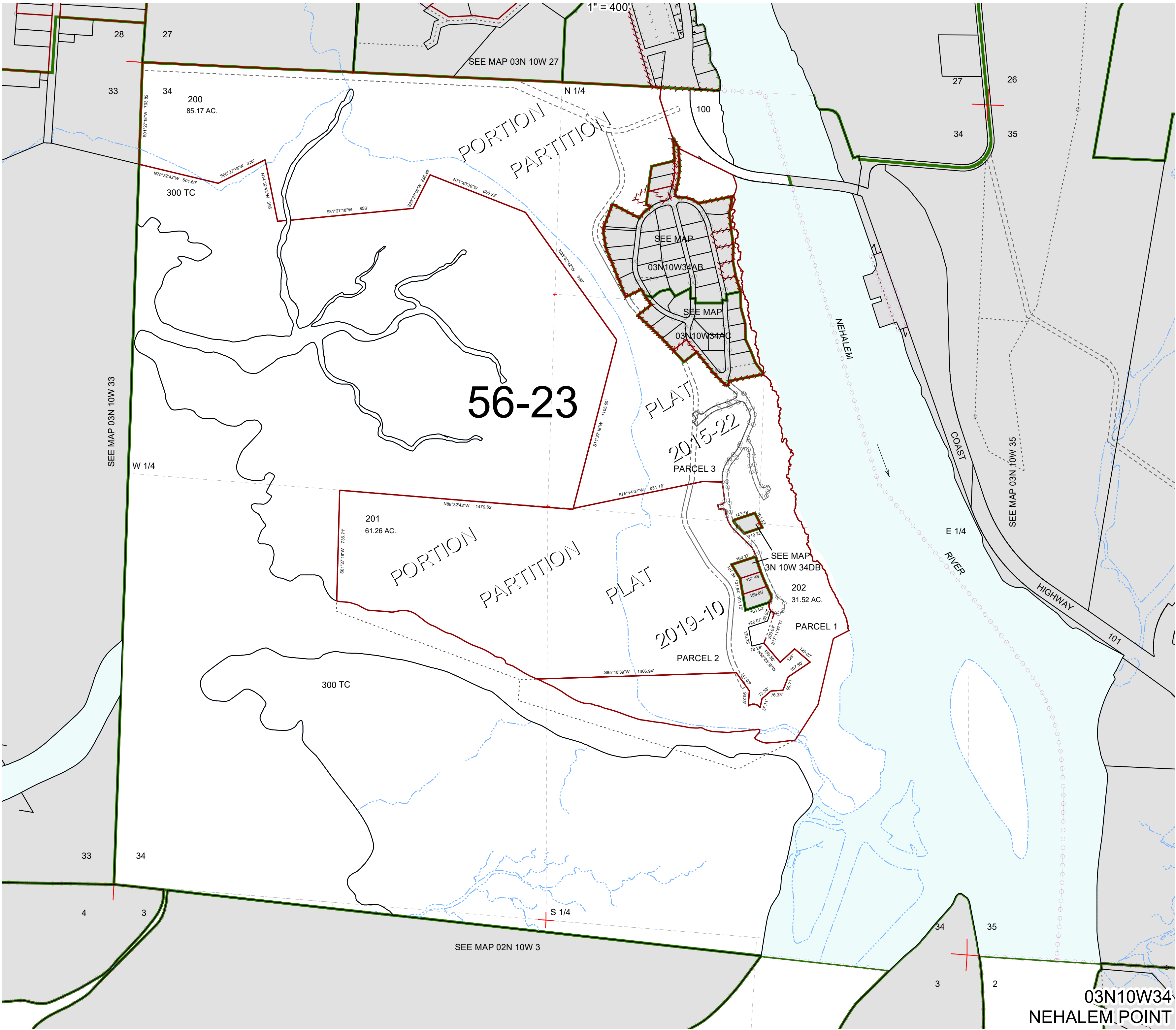
THIS MAP WAS PREPARED FOR
ASSESSMENT PURPOSE ONLY

0 200 400 600 800 Feet

SECTION 34 T.3N. R.10W. W.M.

TILLAMOOK COUNTY

03N10W34
NEHALEM POINT



03N10W34

NEHALEM POINT

Revised 02/14/20, WS