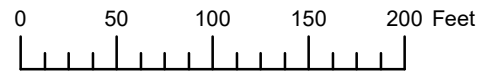


THIS MAP WAS PREPARED FOR
ASSESSMENT PURPOSE ONLY

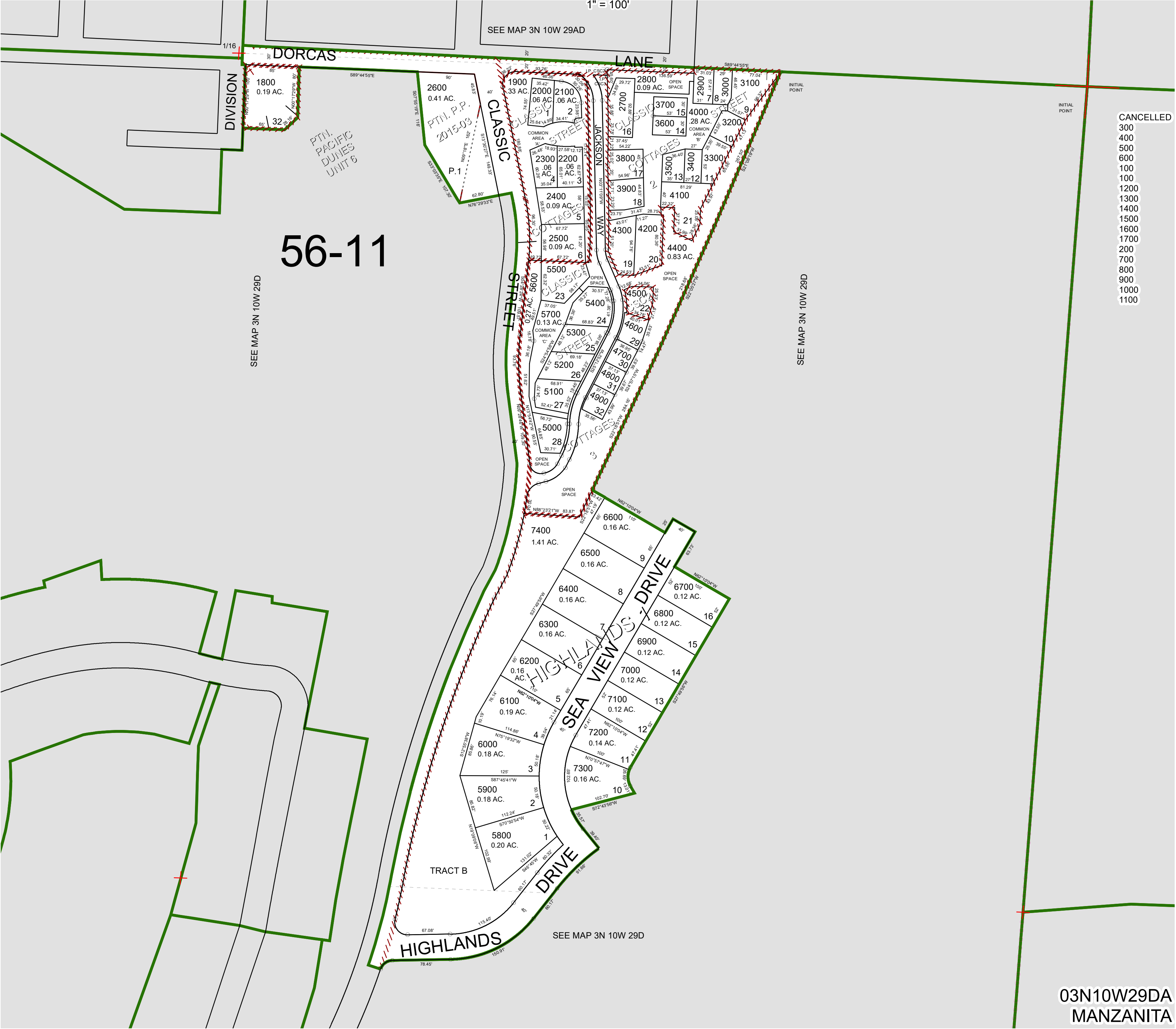


N.E. 1/4 S.E. 1/4 SEC. 29 T.3N. R.10W. W.M.

TILLAMOOK COUNTY

1" = 100'

03N10W29DA
MANZANITA



03N10W29DA
MANZANITA