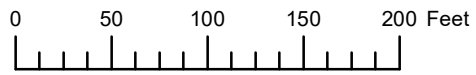


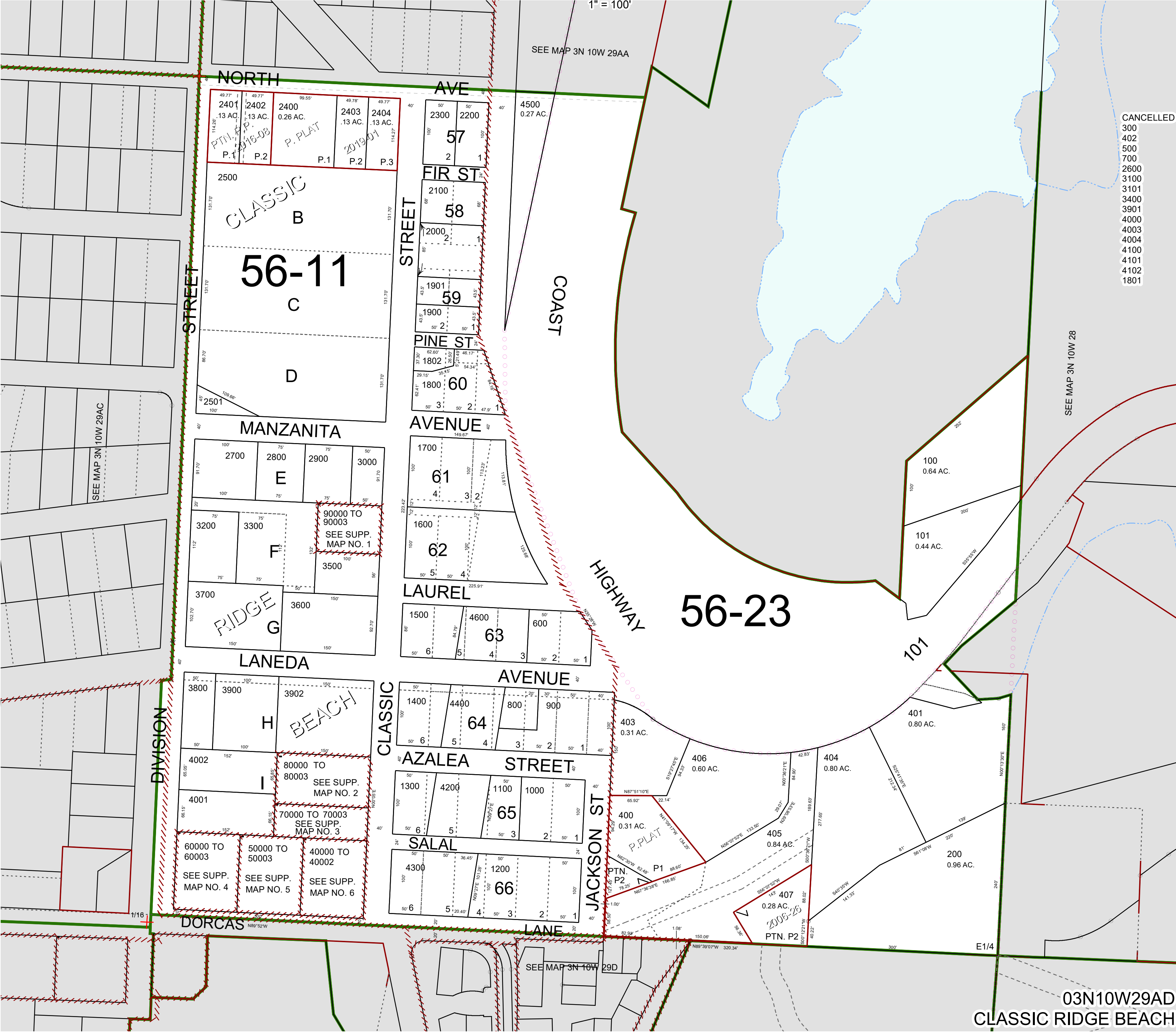
THIS MAP WAS PREPARED FOR
ASSESSMENT PURPOSE ONLY



S.E. 1/4 N.E. 1/4 SEC. 29 T. 3N. R. 10W. W.M.

TILLAMOOK COUNTY

03N10W29AD
CLASSIC RIDGE BEACH



CANCELLED
300
402
500
700
2600
3100
3101
3400
3901
4000
4003
4004
4100
4101
4102
1801