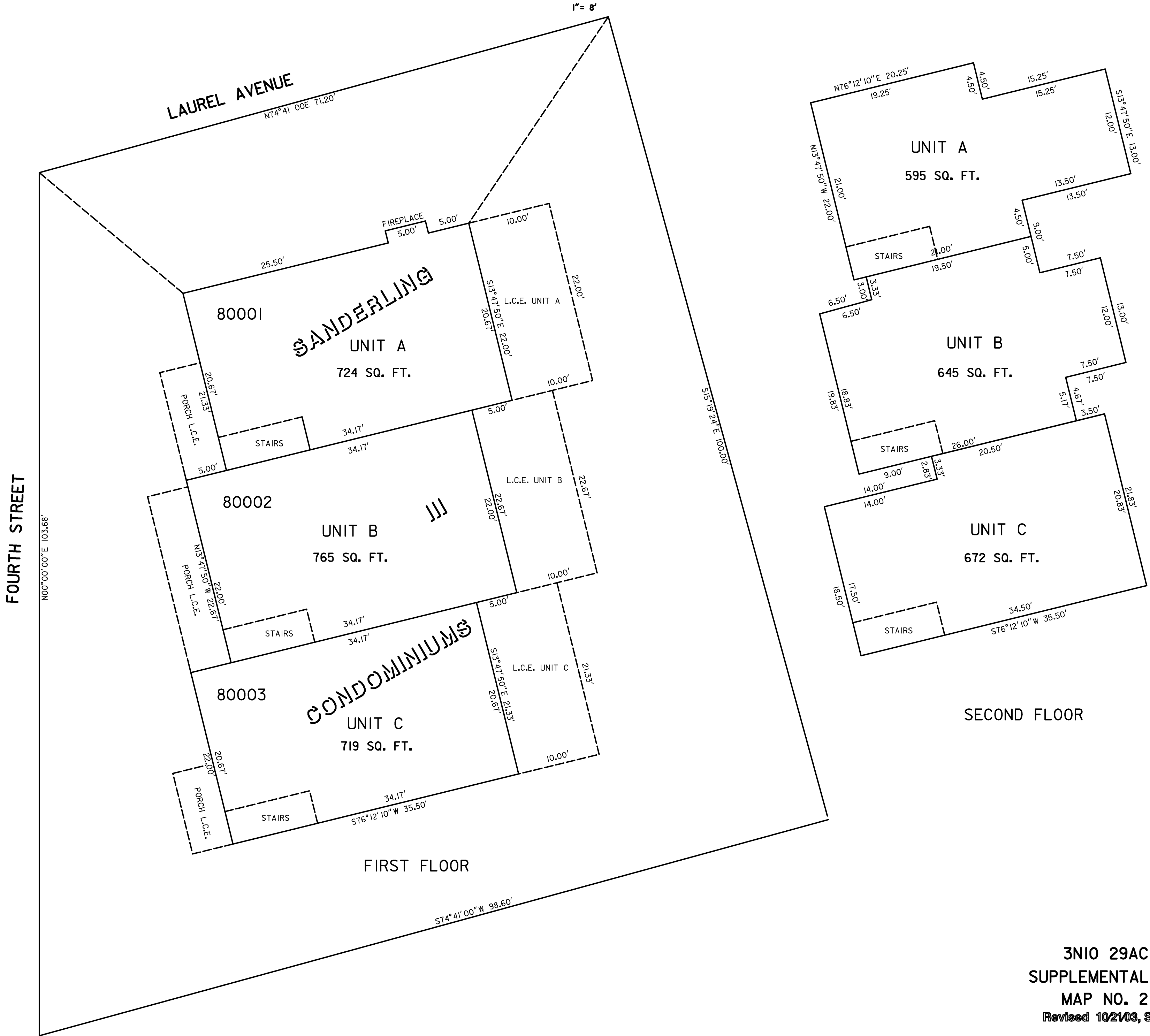


THIS MAP WAS PREPARED FOR
ASSESSMENT PURPOSE ONLY

SUPPLEMENTAL MAP NO. 2
SW1/4 OF THE NE1/2
TILLAMOOK COUNTY

3N10 29AC
SUPPLEMENTAL
MAP NO. 2



3N10 29AC
SUPPLEMENTAL
MAP NO. 2
Revised 10/21/03, SA