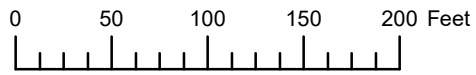


THIS MAP WAS PREPARED FOR
ASSESSMENT PURPOSE ONLY

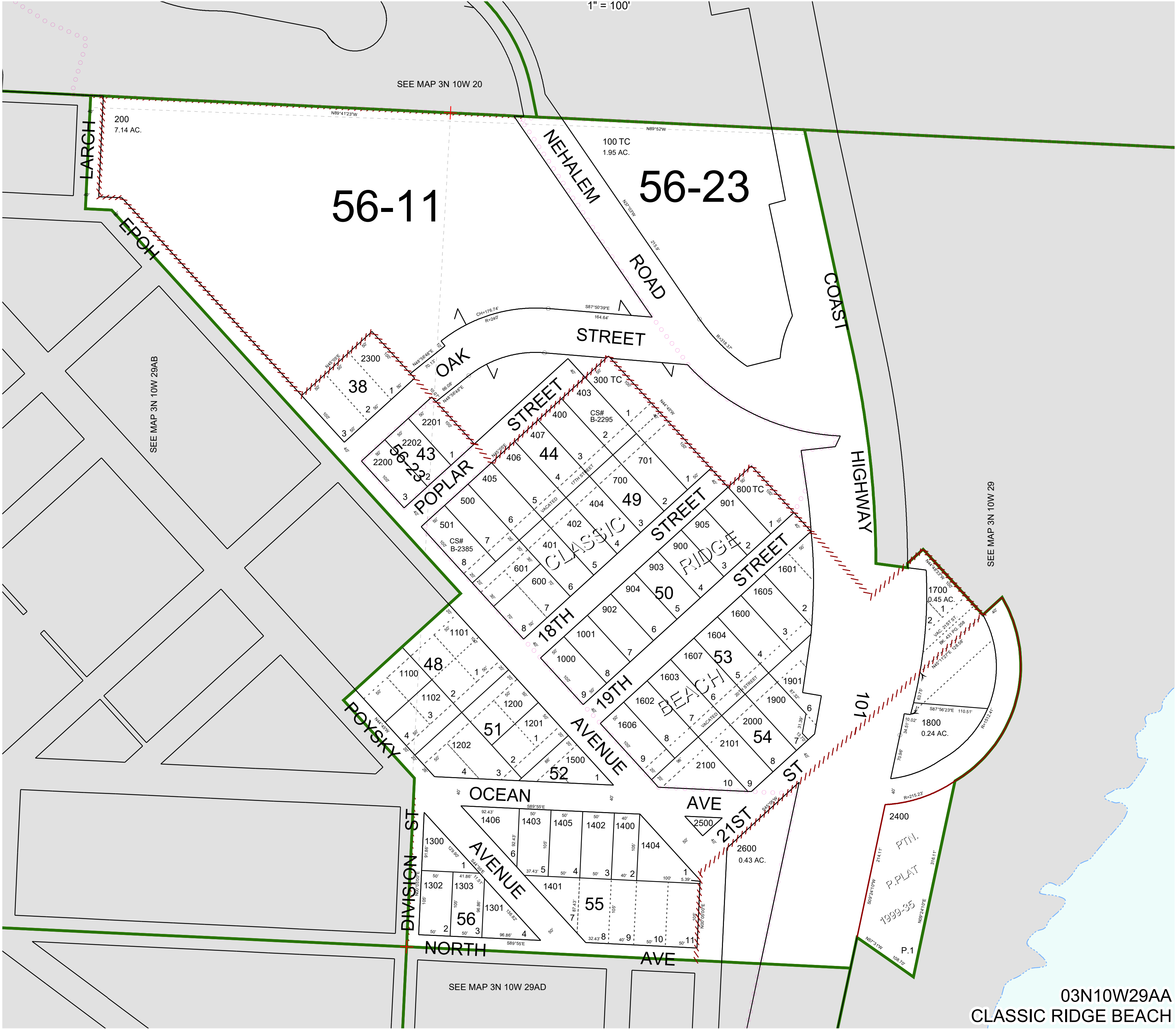


N.E. 1/4 N.E. 1/4 SEC. 29 T. 3N. R. 10W. W.M.

TILLAMOOK COUNTY

1" = 100'

03N10W29AA
CLASSIC RIDGE BEACH



03N10W29AA
CLASSIC RIDGE BEACH