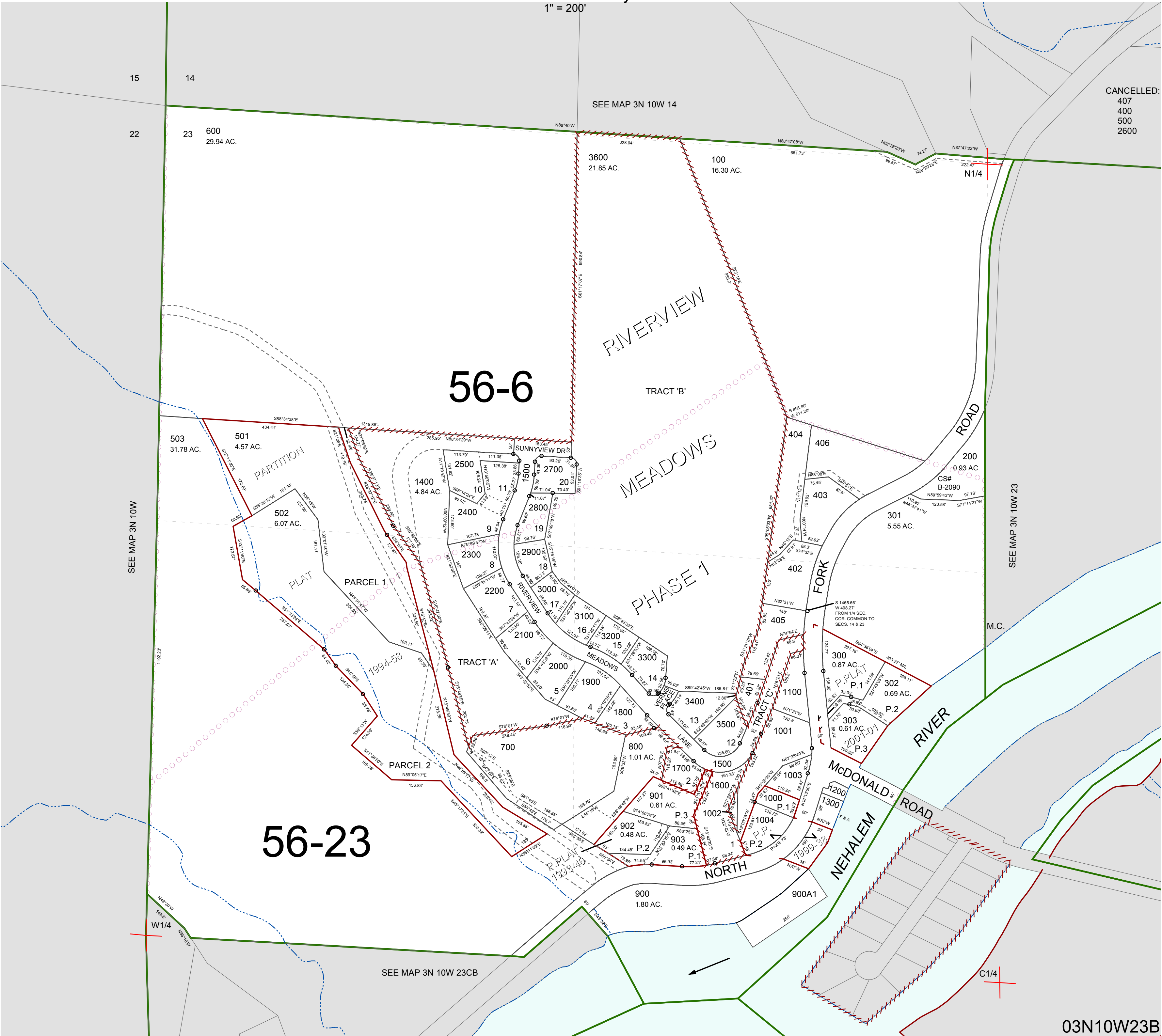


FOR ASSESSMENT AND TAXATION ONLY. NOT SUITABLE FOR
LEGAL, ENGINEERING, OR SURVEY PURPOSES

N.W. 1/4 SEC. 23 T. 3N. R. 10W. W.M.
Tillamook County

1" = 200'

03N10W23B



03N10W23B
REVISED 7/17/15, WS