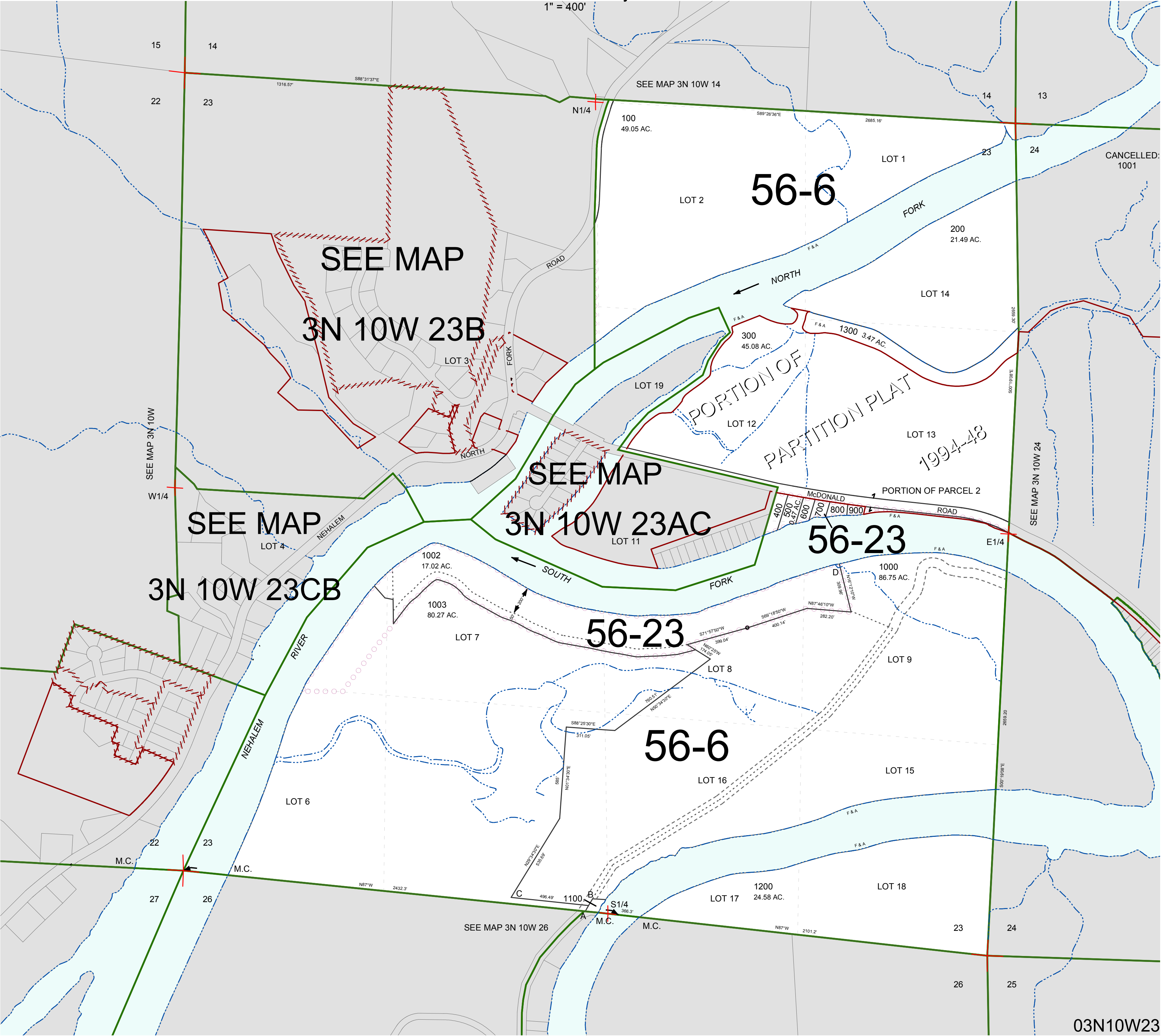


FOR ASSESSMENT AND TAXATION ONLY, NOT SUITABLE FOR
LEGAL, ENGINEERING, OR SURVEY PURPOSES

SECTION 23 T.3N. R.10W. W.M.
Tillamook County

~~1" = 400'~~

03N10W23



03N10W23

REVISED 03/02/18, WS