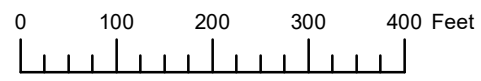


THIS MAP WAS PREPARED FOR ASSESSMENT PURPOSE ONLY

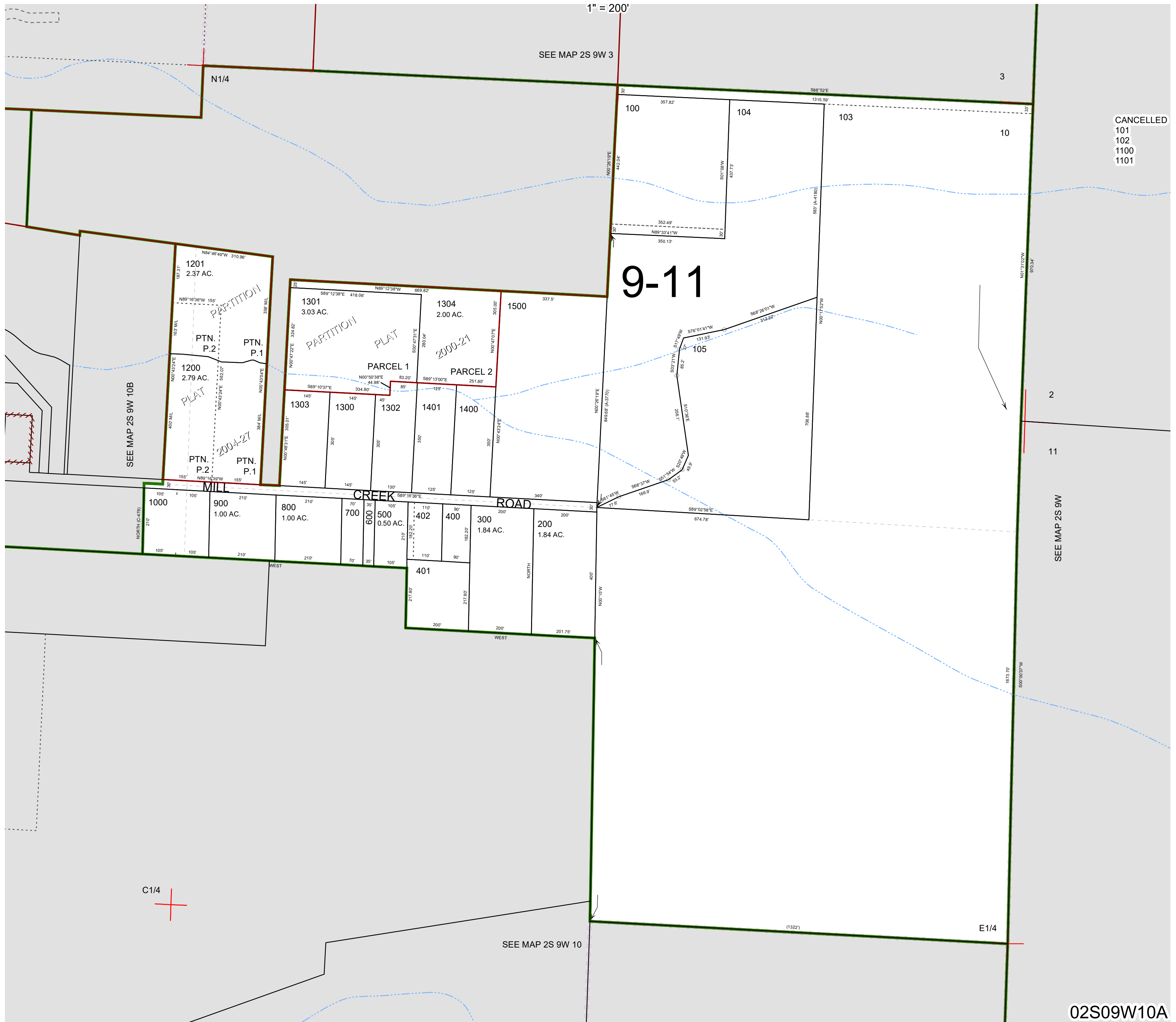


N.E. 1/4 SEC. 10 T.2S. R.9W. W.M.

TILLAMOOK COUNTY

02S09W10A

1" = 200'



CANCELLED
101
102
1100
1101

9-11

C1/4

SEE MAP 2S 9W 10

02S09W10A

Revised 02/14/20, WS