

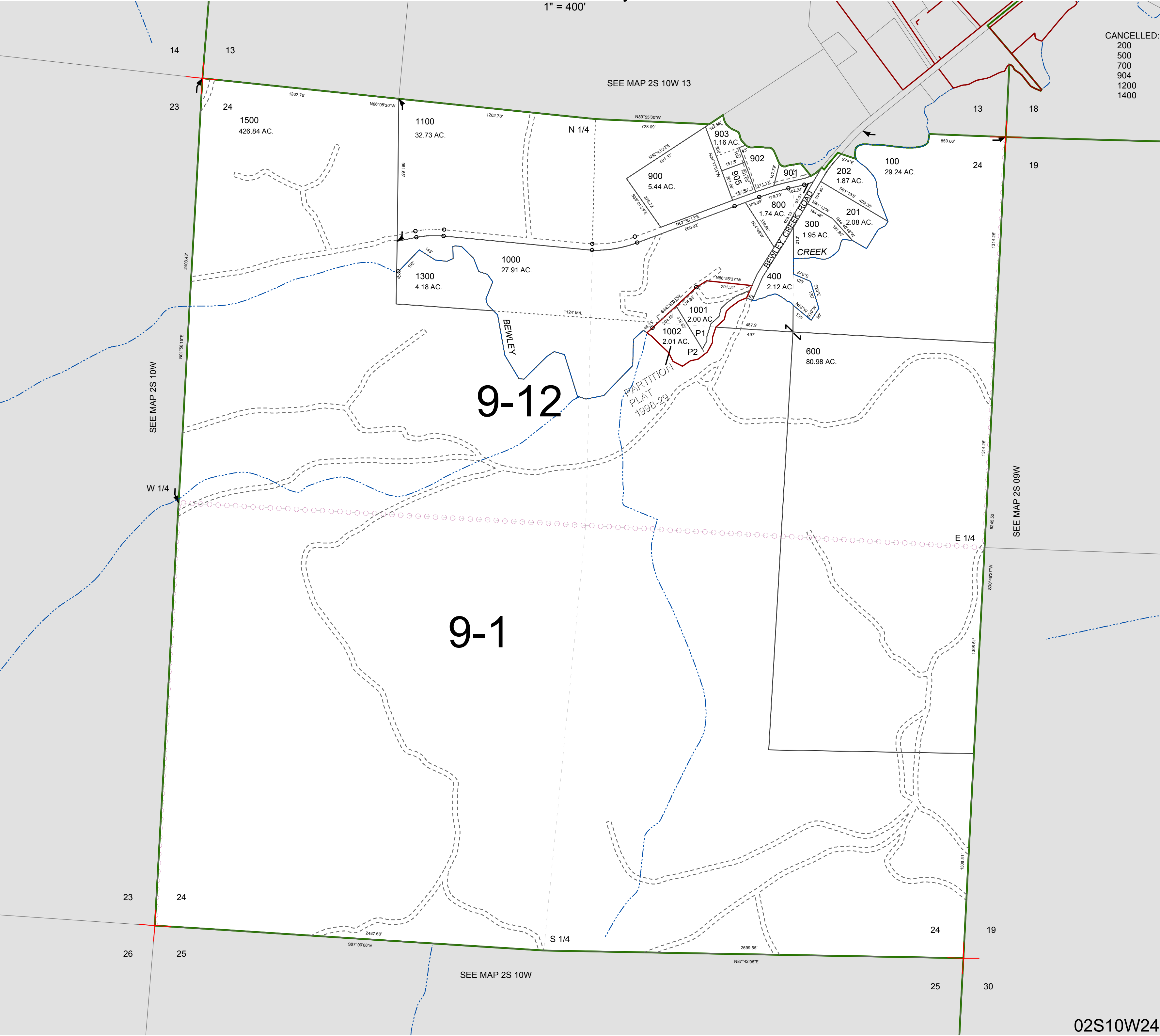
FOR ASSESSMENT AND TAXATION ONLY, NOT SUITABLE FOR
LEGAL, ENGINEERING, OR SURVEY PURPOSES

SECTION 24 T.2S. R.10W. W.M.
Tillamook County

1" = 400'

02S10W24

CANCELLED:
200
500
700
904
1200
1400



02S10W24
REVISED 2/18/16, WS