

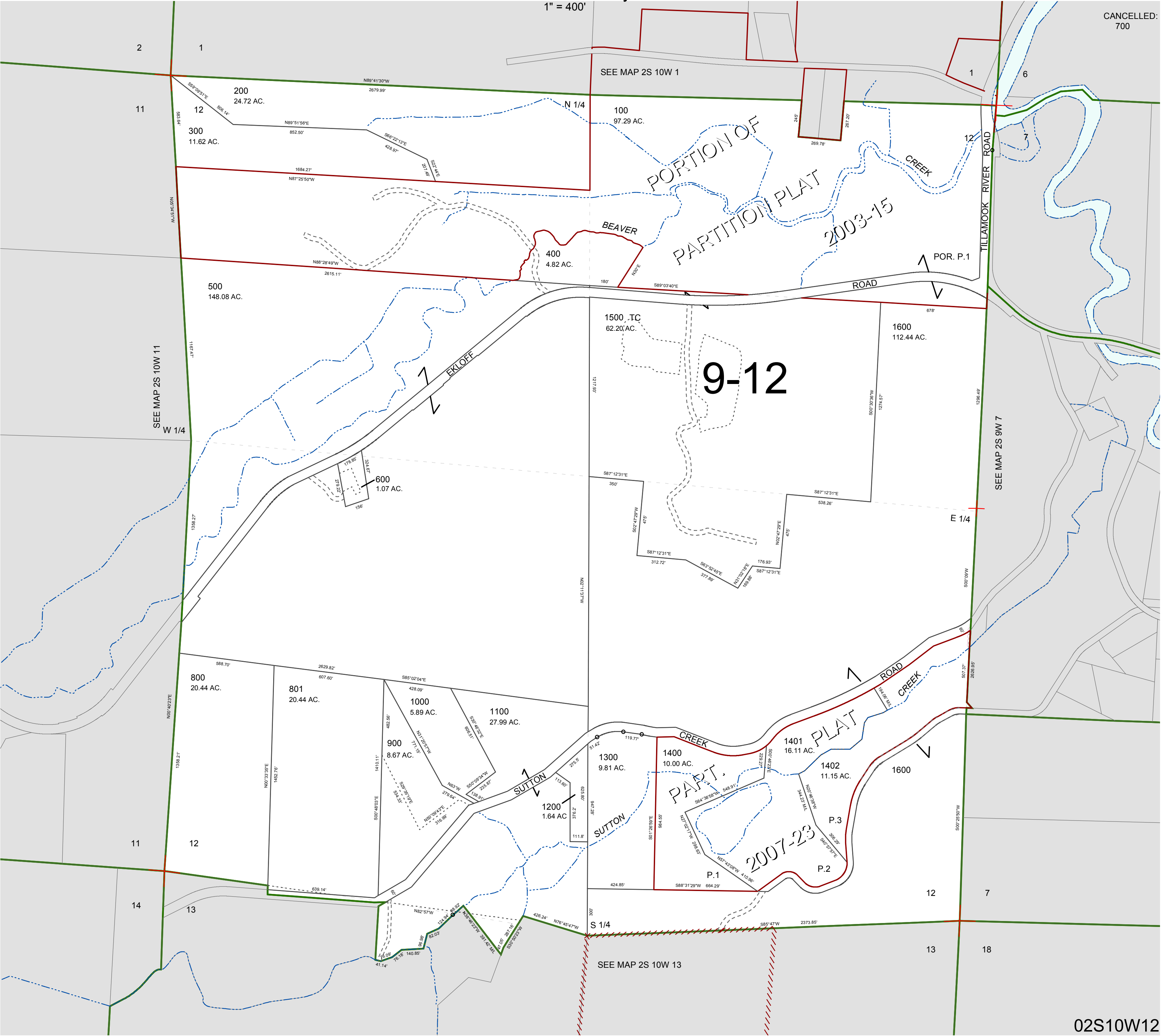
FOR ASSESSMENT AND TAXATION ONLY, NOT SUITABLE FOR  
LEGAL, ENGINEERING, OR SURVEY PURPOSES

SECTION 12 T.2S. R.10W. W.M.  
Tillamook County

1" = 400'

02S10W12

CANCELLED:  
700



02S10W12  
REVISED 2/18/16, WS