

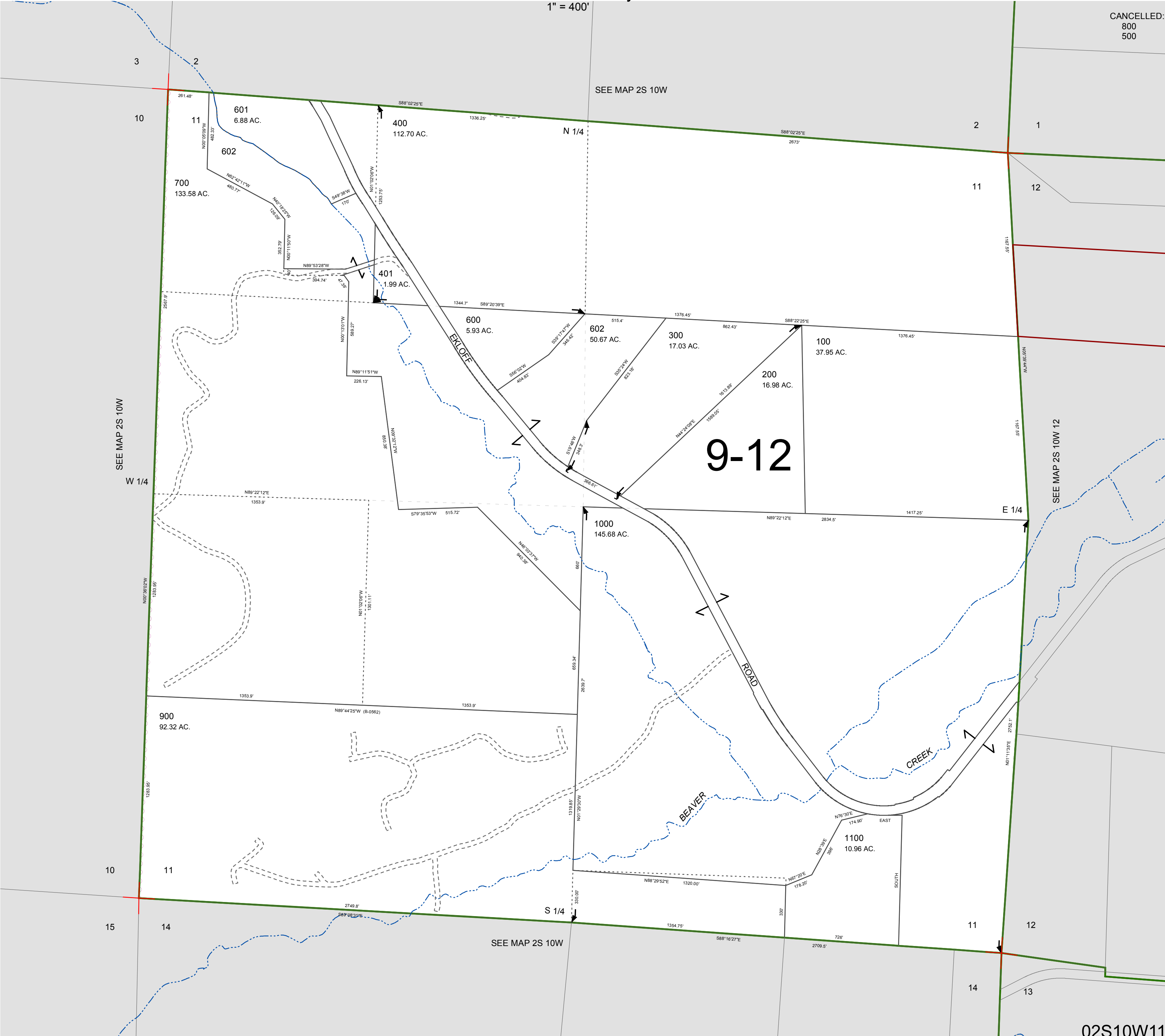
FOR ASSESSMENT AND TAXATION ONLY, NOT SUITABLE FOR
LEGAL, ENGINEERING, OR SURVEY PURPOSES

SECTION 11 T.2S. R.10W. W.M.
Tillamook County

$$1'' = 400'$$

02S10W11

CANCELLED:
800
500



02S10W11

REVISED 2/18/16, WS