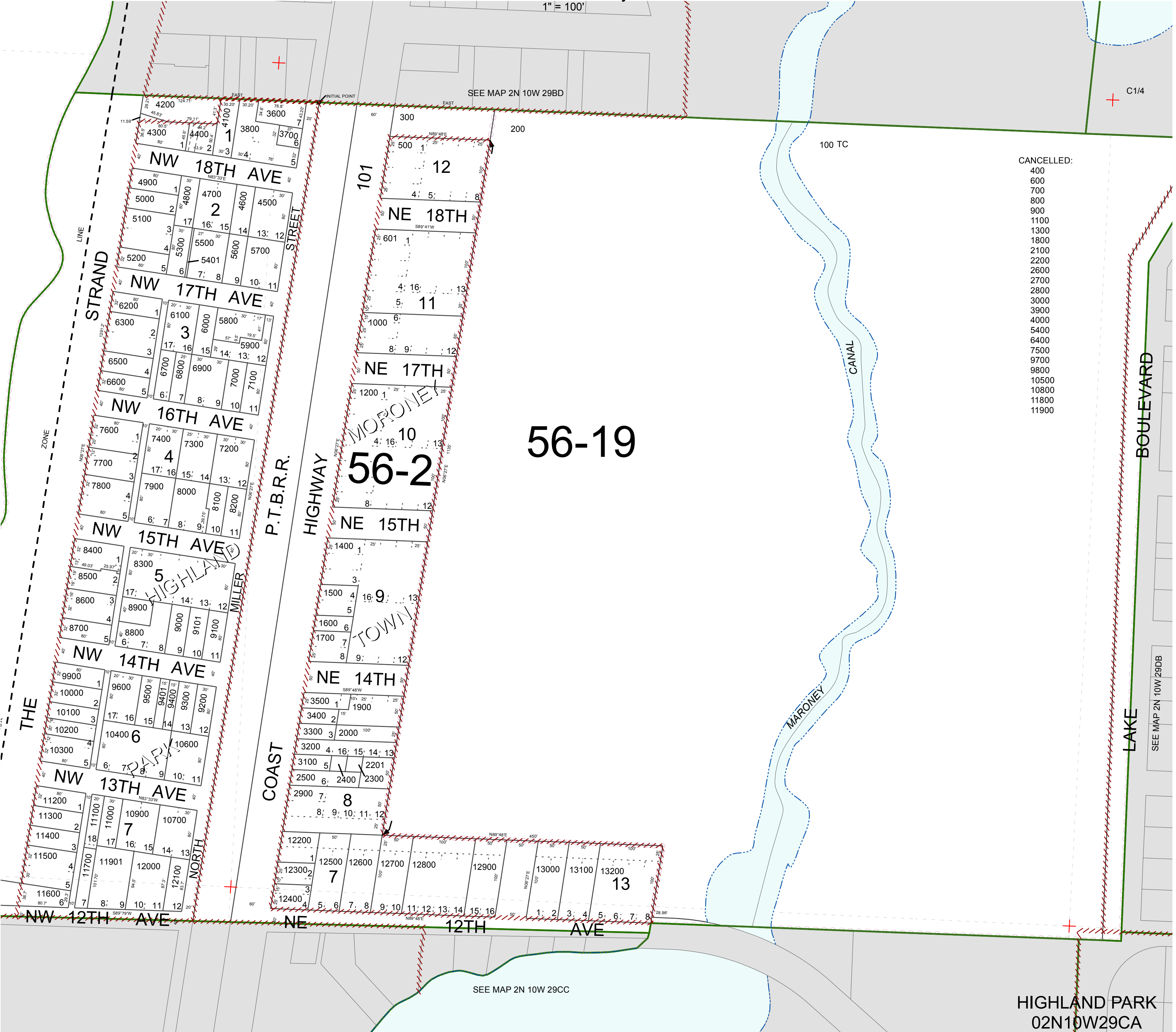


FOR ASSESSMENT AND TAXATION ONLY. NOT SUITABLE FOR
LEGAL, ENGINEERING, OR SURVEY PURPOSES

N.E. 1/4 S.W. 1/4 SEC. 29 T. 2N. R. 10W. W.M.
Tillamook County

02N10W29CA
HIGHLAND PARK

1" = 100'



- CANCELLED:
- 400
 - 600
 - 700
 - 800
 - 900
 - 1100
 - 1300
 - 1800
 - 2100
 - 2200
 - 2600
 - 2700
 - 2800
 - 3000
 - 3900
 - 4000
 - 5400
 - 6400
 - 7500
 - 9700
 - 9800
 - 10500
 - 10800
 - 11800
 - 11900

HIGHLAND PARK
02N10W29CA

REVISED 2/20/15, WS