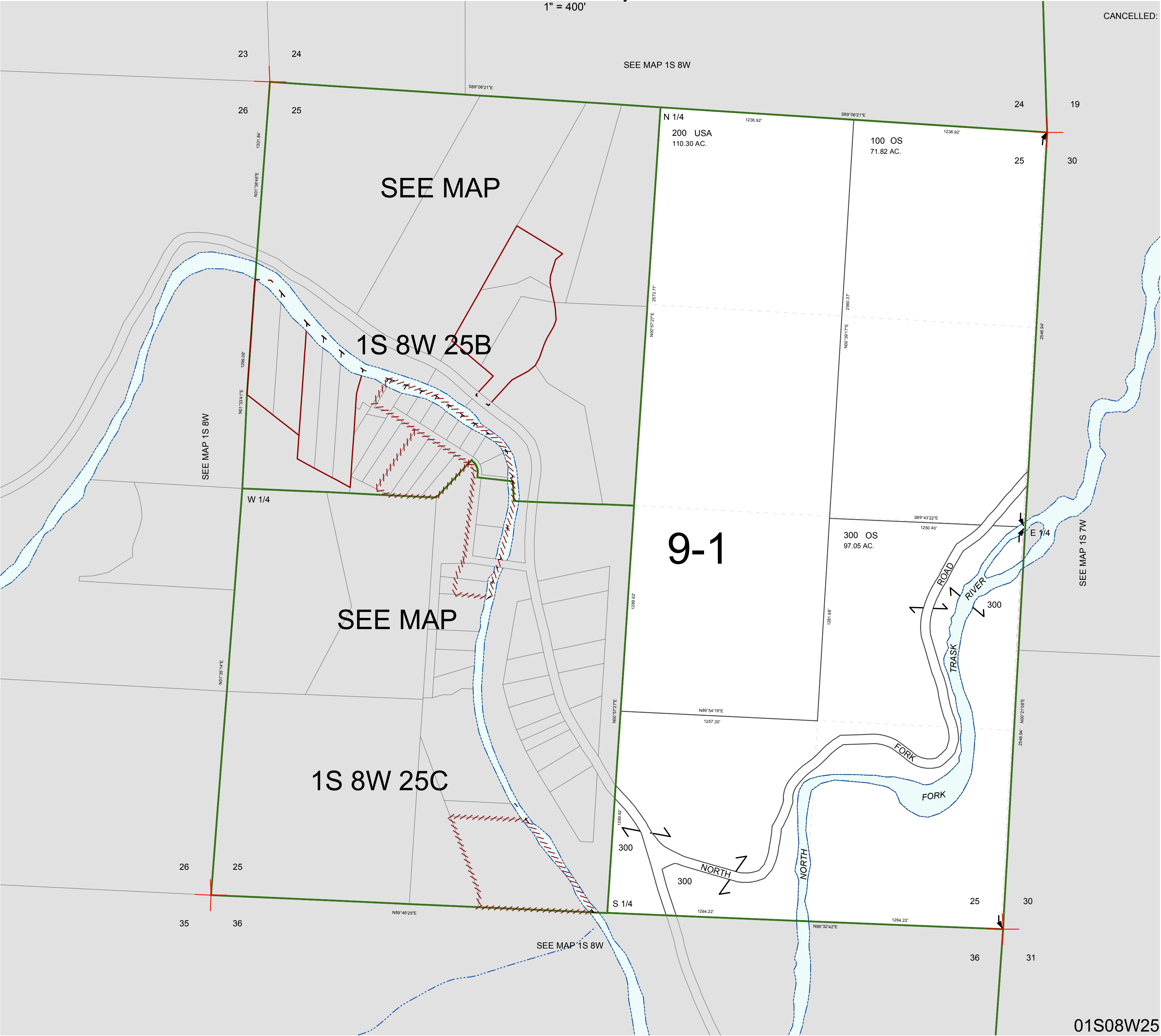


FOR ASSESSMENT AND TAXATION ONLY, NOT SUITABLE FOR  
LEGAL, ENGINEERING, OR SURVEY PURPOSES

SECTION 25 T.1S. R.8W. W.M.  
Tillamook County  
1" = 400'

01S08W25

CANCELLED:



01S08W25

REVISED 2/18/16, WS