

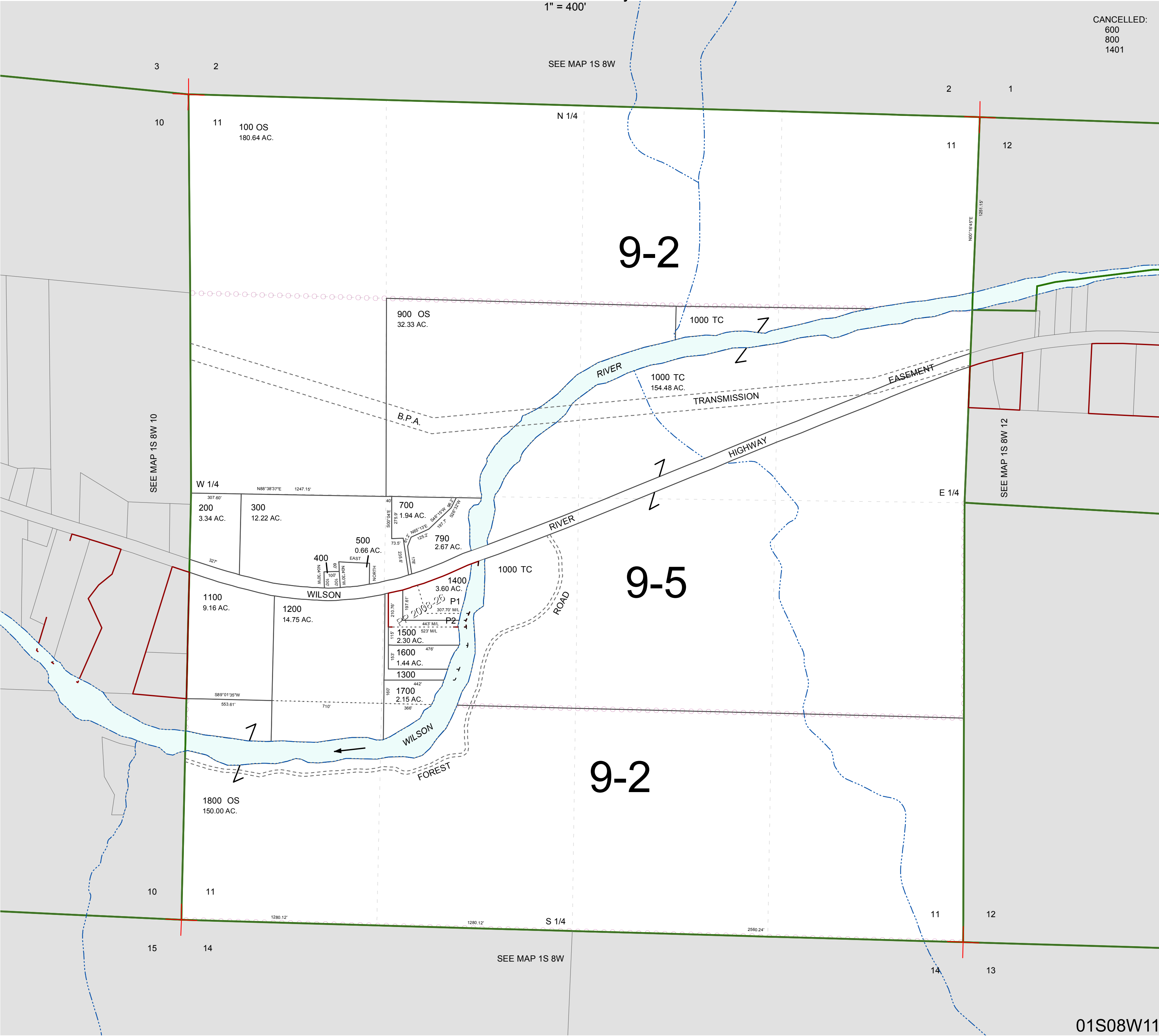
FOR ASSESSMENT AND TAXATION ONLY, NOT SUITABLE FOR
LEGAL, ENGINEERING, OR SURVEY PURPOSES

SECTION 11 T.1S. R.8W. W.M.
Tillamook County

$$1'' = 400'$$

01S08W11

CANCELLED:
600
800
1401



01S08W11

REVISED 2/18/16, WS