

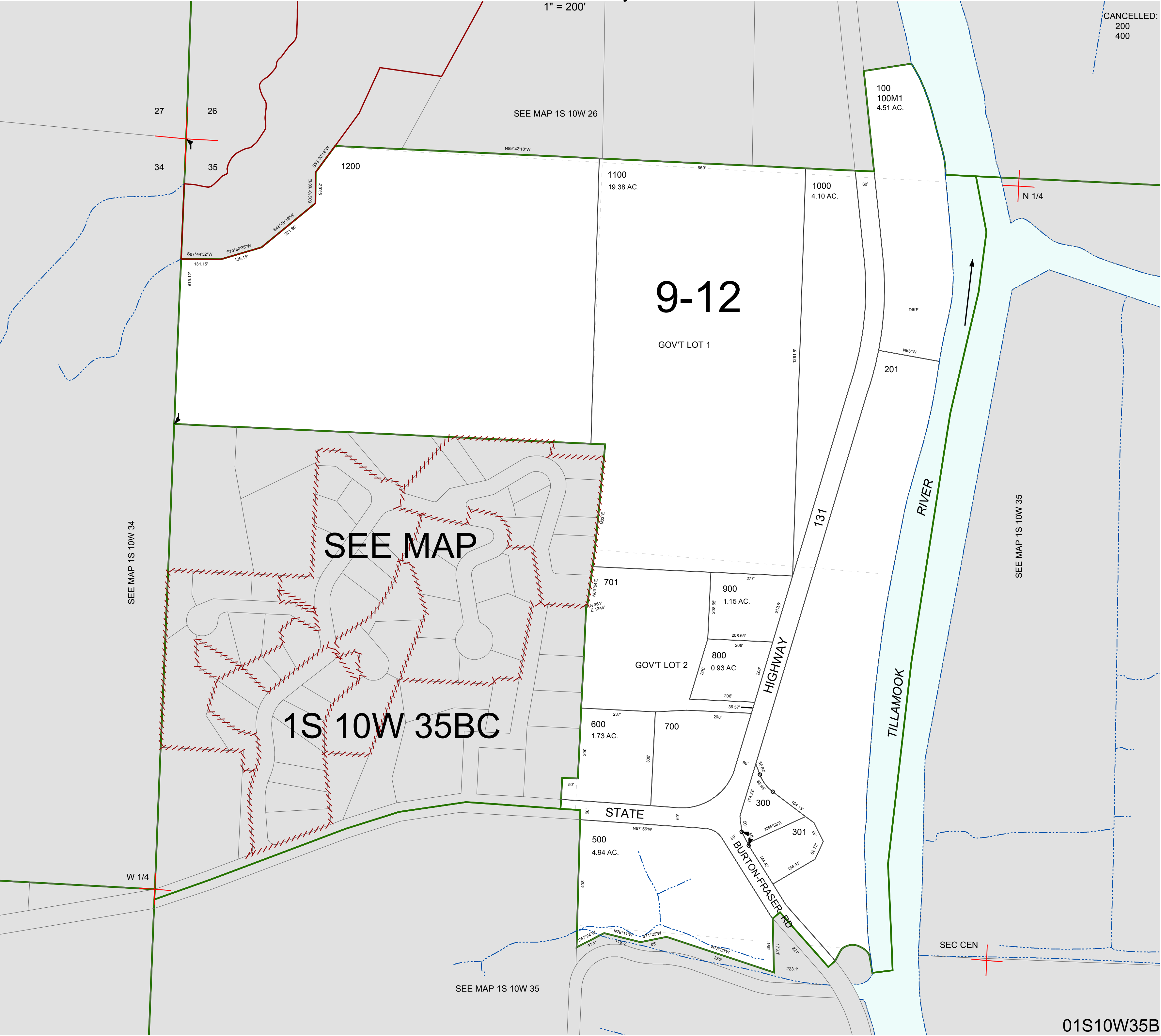
FOR ASSESSMENT AND TAXATION ONLY, NOT SUITABLE FOR
LEGAL, ENGINEERING, OR SURVEY PURPOSES

N.W.1/4 SEC.35 T.1S. R.10W. W.M.
Tillamook County

01S10W35B

1" = 200'

CANCELLED:
200
400



01S10W35B
REVISED 2/18/16, WS