

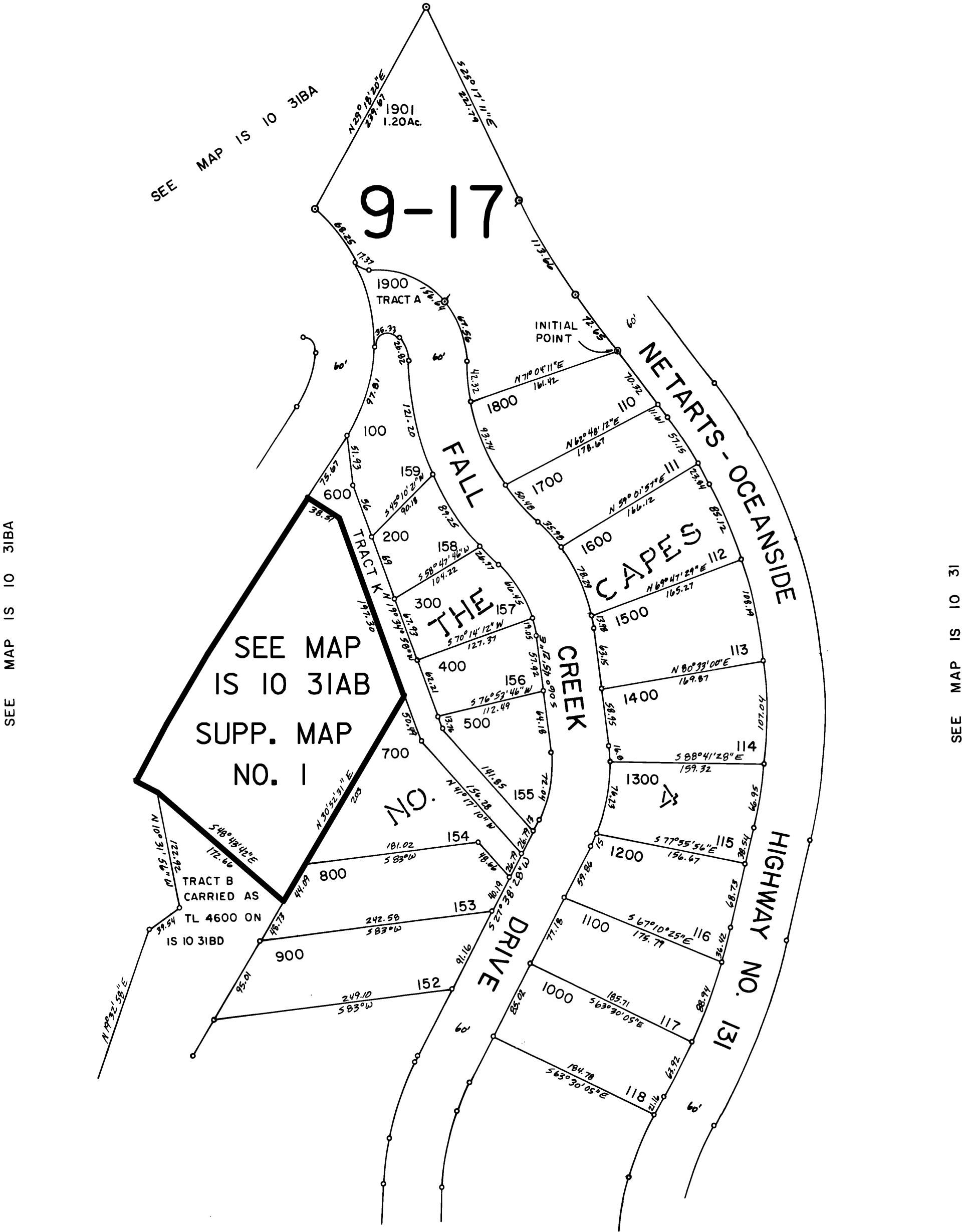
THIS MAP WAS PREPARED FOR
ASSESSMENT PURPOSE ONLY

NW1/4 NE1/4 SEC.31 T.1S. R.10W.W.M.
TILLAMOOK COUNTY

1" = 100'

IS 10 31AB

+ N 1/4



IS 10 31AB

REVISED 11-5-98, JD