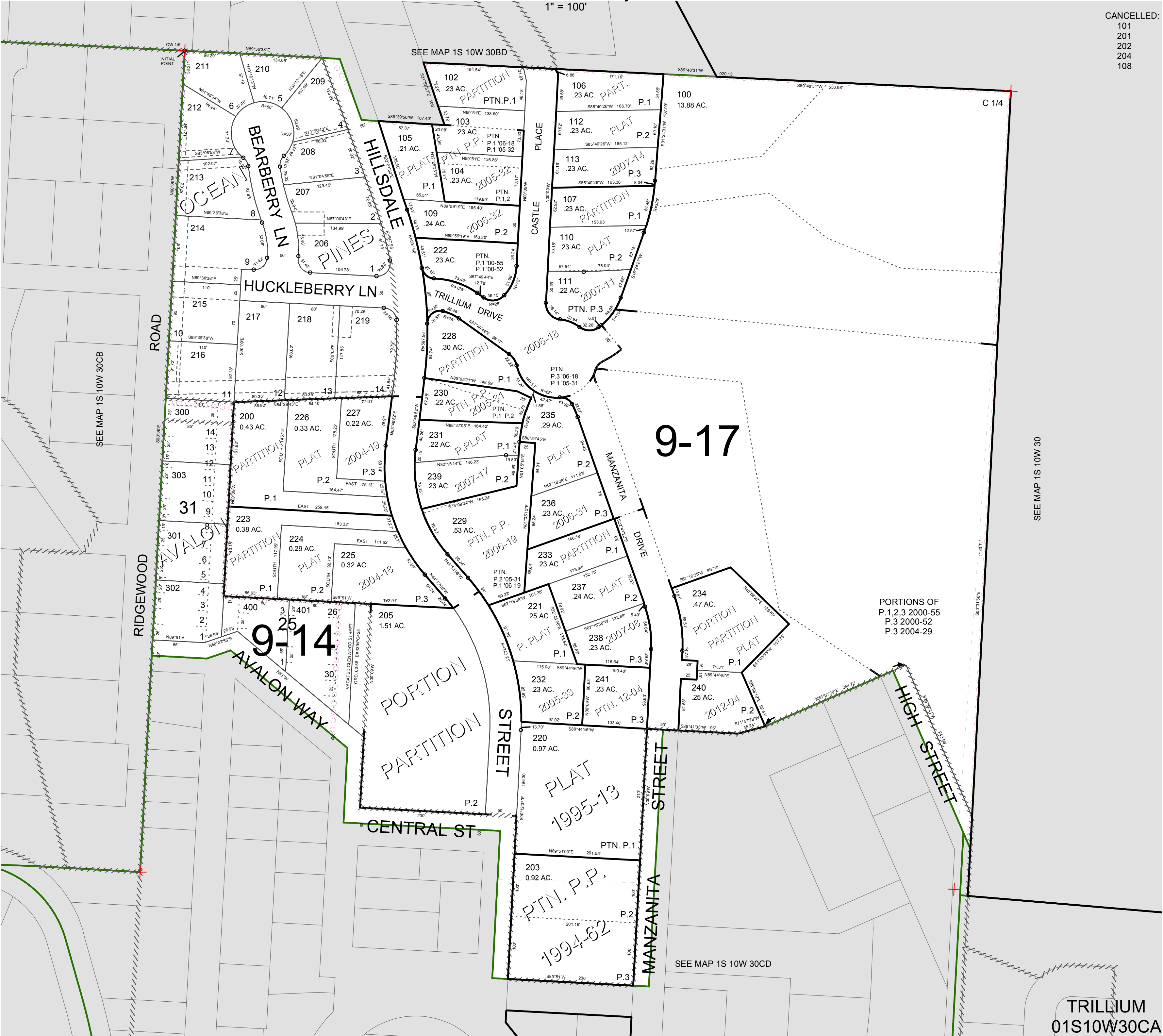


FOR ASSESSMENT AND TAXATION ONLY, NOT SUITABLE FOR
LEGAL, ENGINEERING, OR SURVEY PURPOSES

N.E.1/4 S.W.1/4 SEC.30 T.1S. R.10W. W.M.
Tillamook County
1" = 100'

01S10W30CA
TRILLIUM

CANCELLED:
101
201
202
204
108



TRILLIUM
01S10W30CA
REVISED 07/18/12, WS