

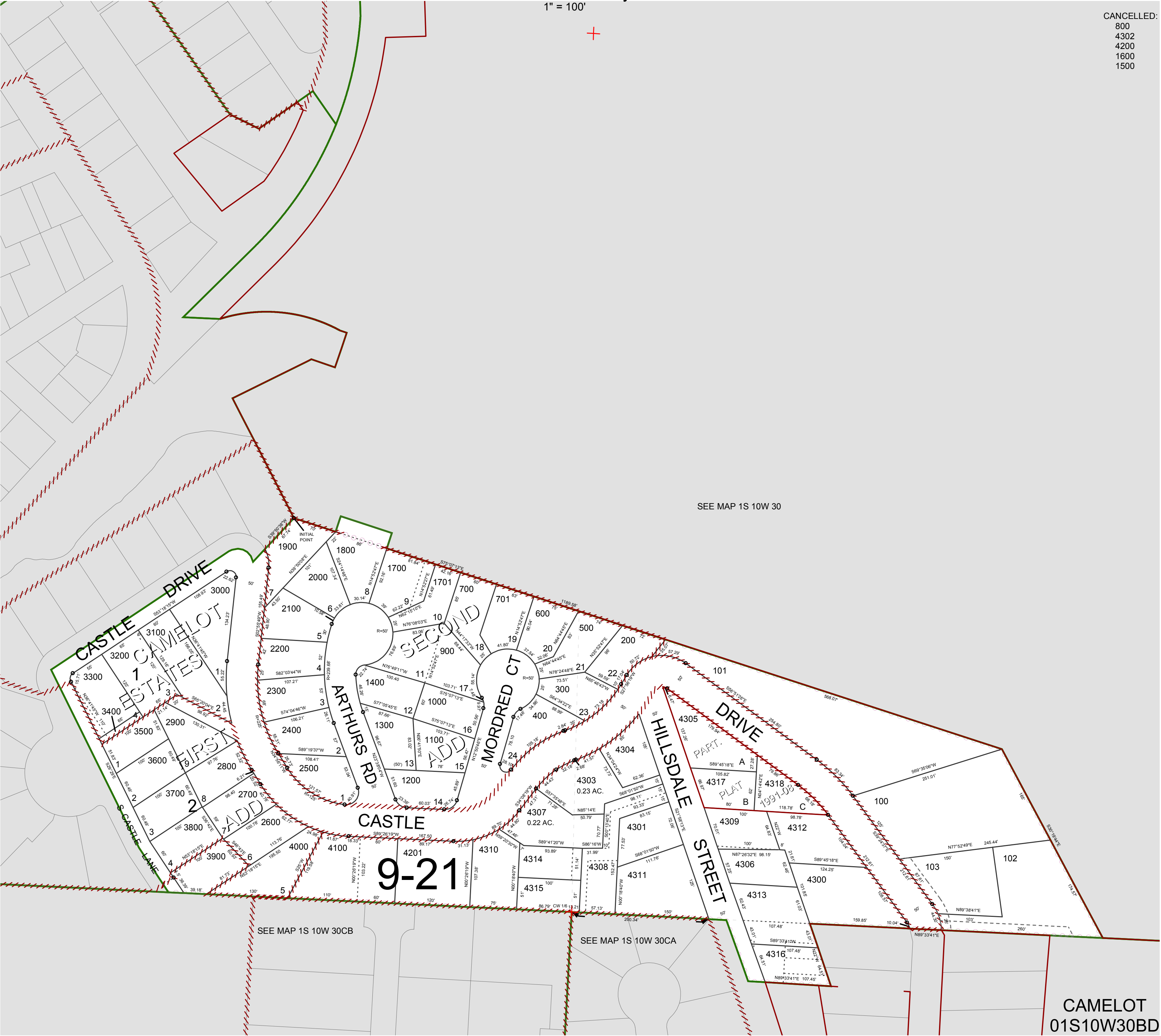
FOR ASSESSMENT AND TAXATION ONLY, NOT SUITABLE FOR
LEGAL, ENGINEERING, OR SURVEY PURPOSES

S.E.1/4 N.W.1/4 SEC.30 T.1S. R.10W. W.M.
Tillamook County

1" = 100'

01S10W30BD
CAMELOT

CANCELLED:
800
4302
4200
1600
1500



CAMELOT
01S10W30BD
REVISED 12/29/17, WS