

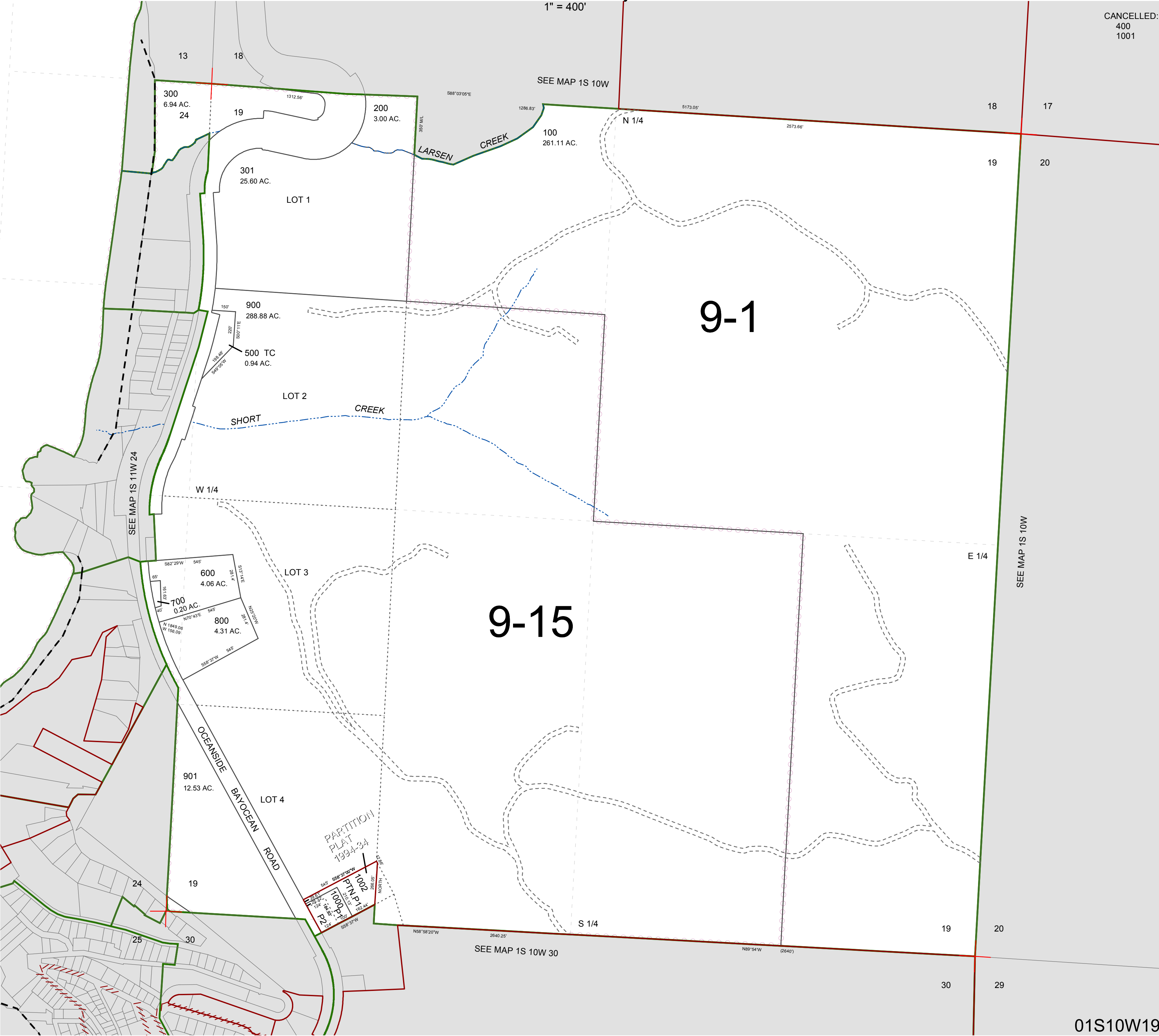
FOR ASSESSMENT AND TAXATION ONLY, NOT SUITABLE FOR
LEGAL, ENGINEERING, OR SURVEY PURPOSES

SECTION 19 T.1S. R.10W. W.M.
Tillamook County

$$1'' = 400'$$

01S10W19

CANCELLED:
400
1001



01S10W19

REVISED 2/18/16, WS