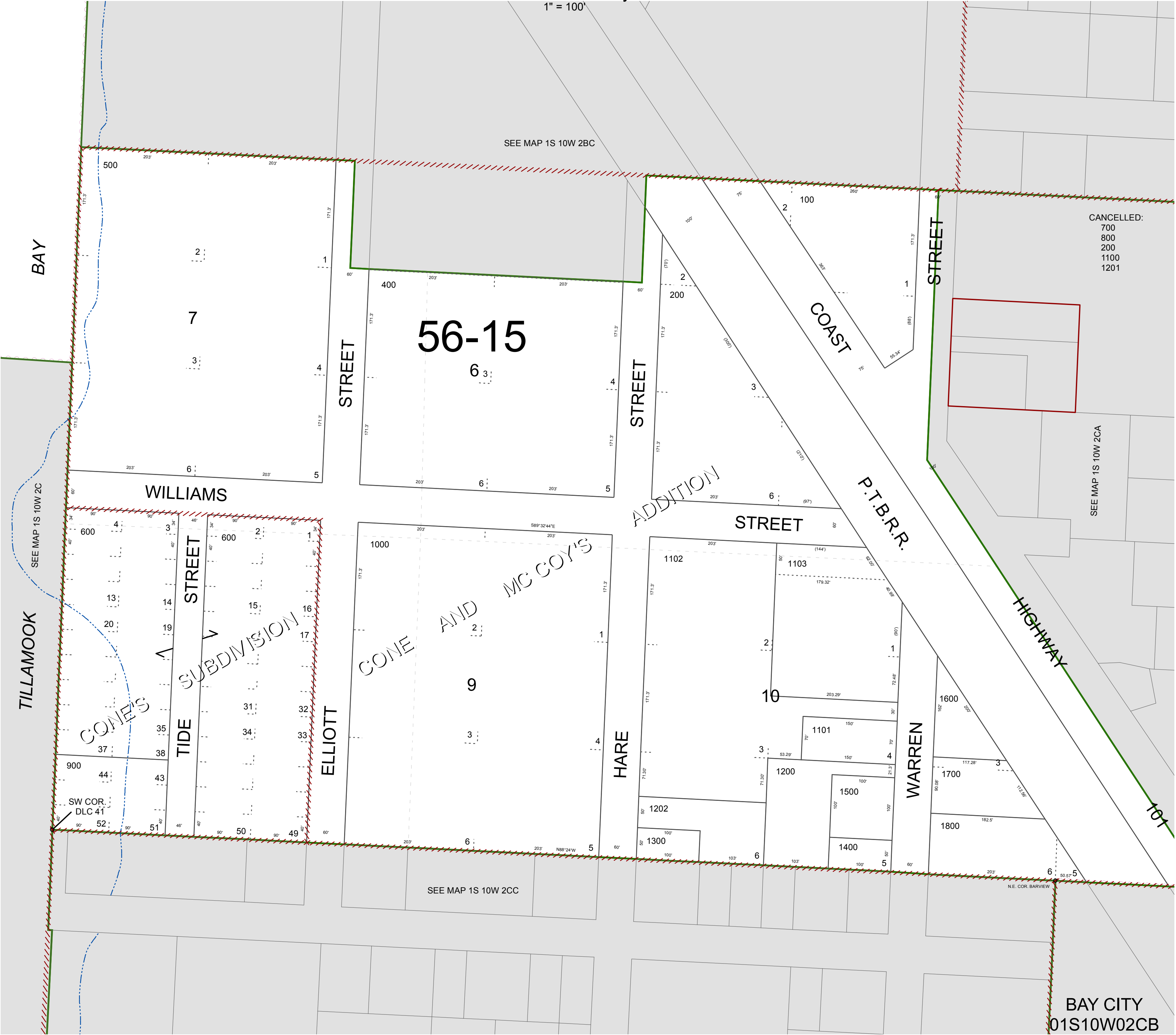


FOR ASSESSMENT AND TAXATION ONLY. NOT SUITABLE FOR
LEGAL, ENGINEERING, OR SURVEY PURPOSES

N.W.1/4 S.W.1/4 SEC.2 T.1S. R.10W. W.M.
Tillamook County

1" = 100'

01S10W02CB
BAY CITY



CANCELLED:
700
800
200
1100
1201

SEE MAP 1S 10W 2CA

BAY CITY
01S10W02CB
REVISED 7/10/15, WS