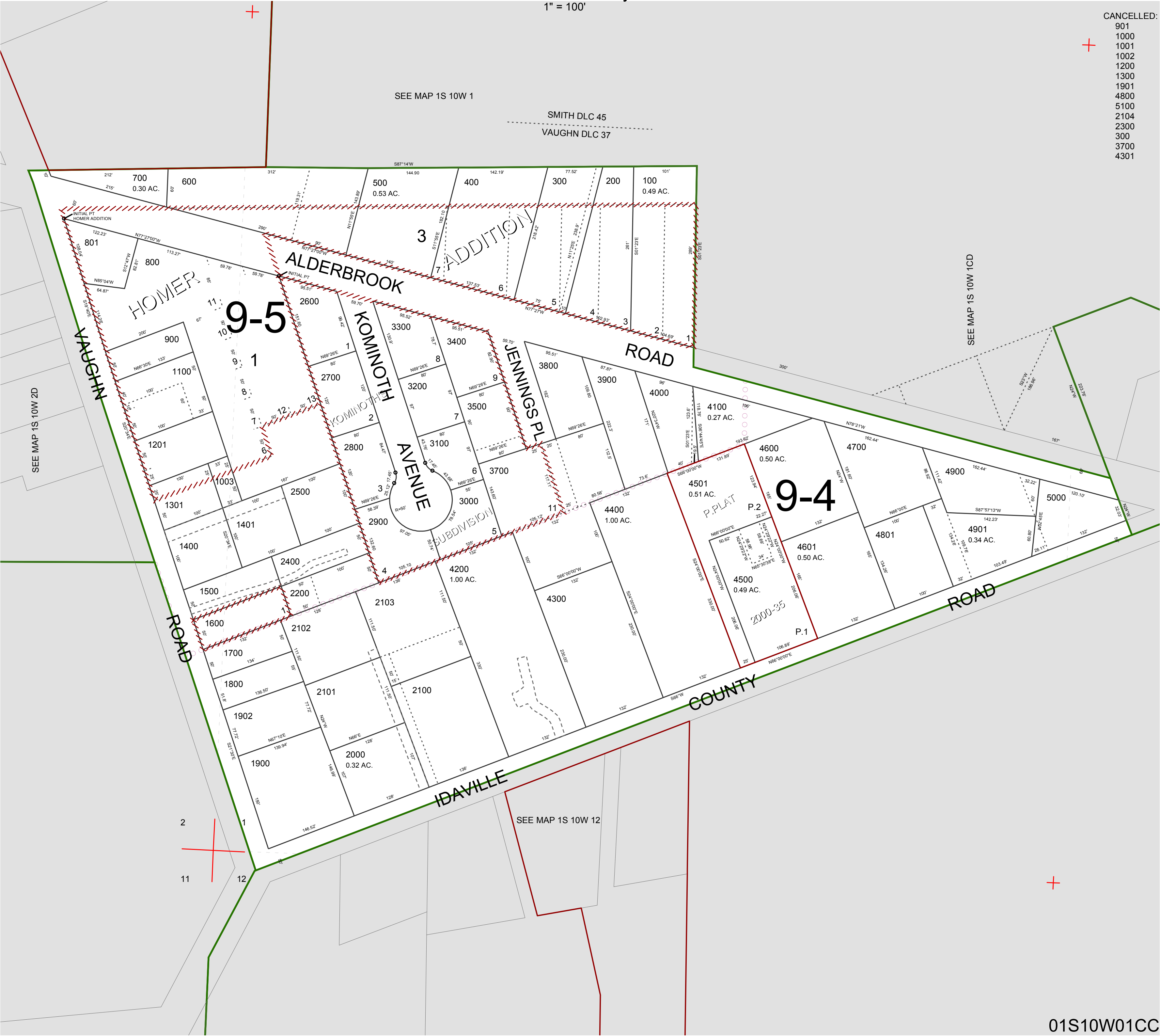


FOR ASSESSMENT AND TAXATION ONLY, NOT SUITABLE FOR
LEGAL, ENGINEERING, OR SURVEY PURPOSES

S.W.1/4 S.W.1/4 SEC.1 T.1S. R.10W. W.M.
Tillamook County
1" = 100'

01S10W01CC

CANCELLED:
901
1000
1001
1002
1200
1300
1901
4800
5100
2104
2300
300
3700
4301



01S10W01CC
REVISED 05/22/18, WS