

THIS MAP WAS PREPARED FOR
ASSESSMENT PURPOSE ONLY

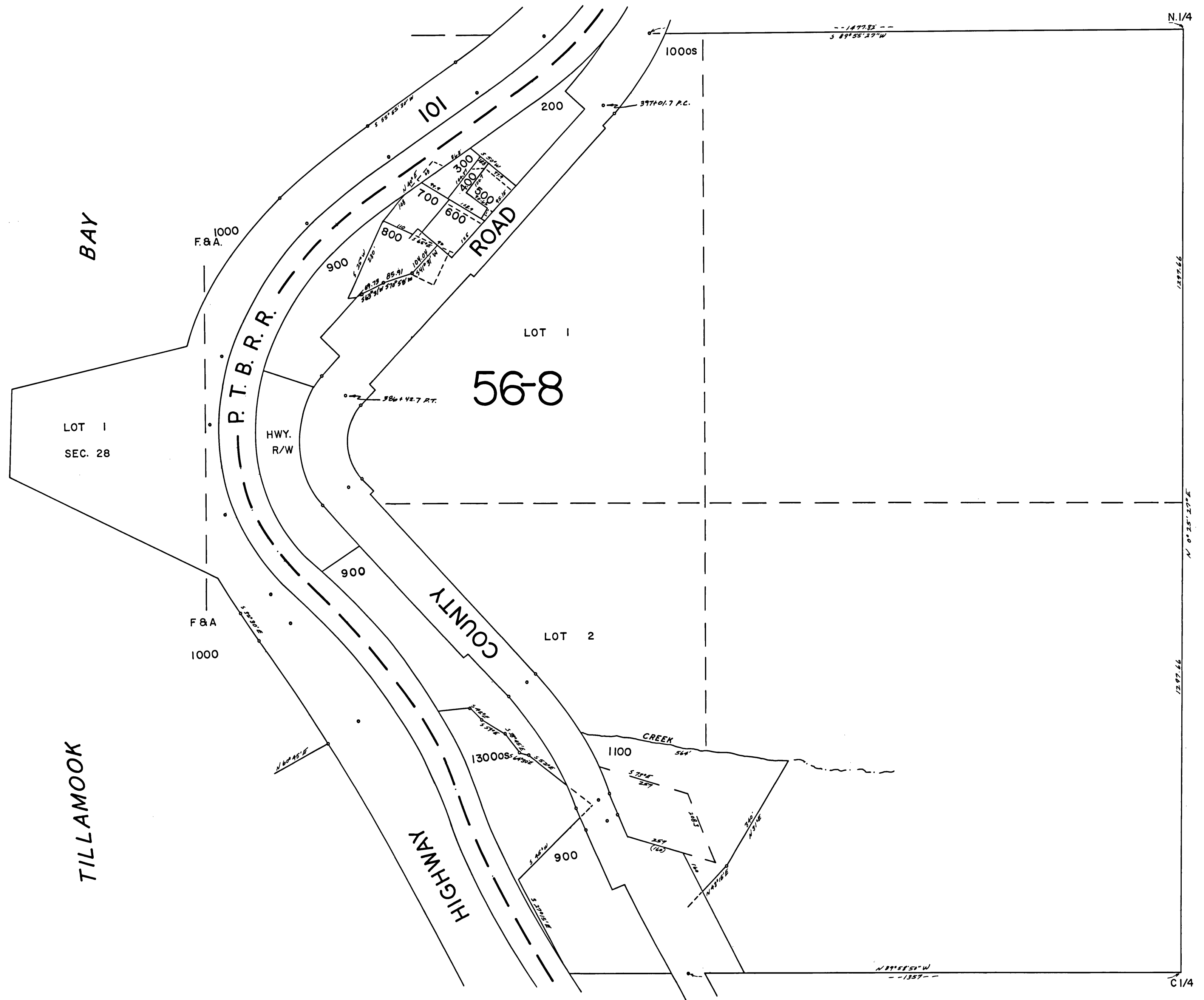
NW1/4 SEC.27 T.1N. .10W. W.M
TILLAMOOK COUNTY

1" = 200'

IN 10 27B

CANCELLED
1200

SEE MAP IN 10 22



SEE MAP IN 10 27

SEE MAP IN 10 27

IN 10 27B

REVISED 3-2-99, BPH