

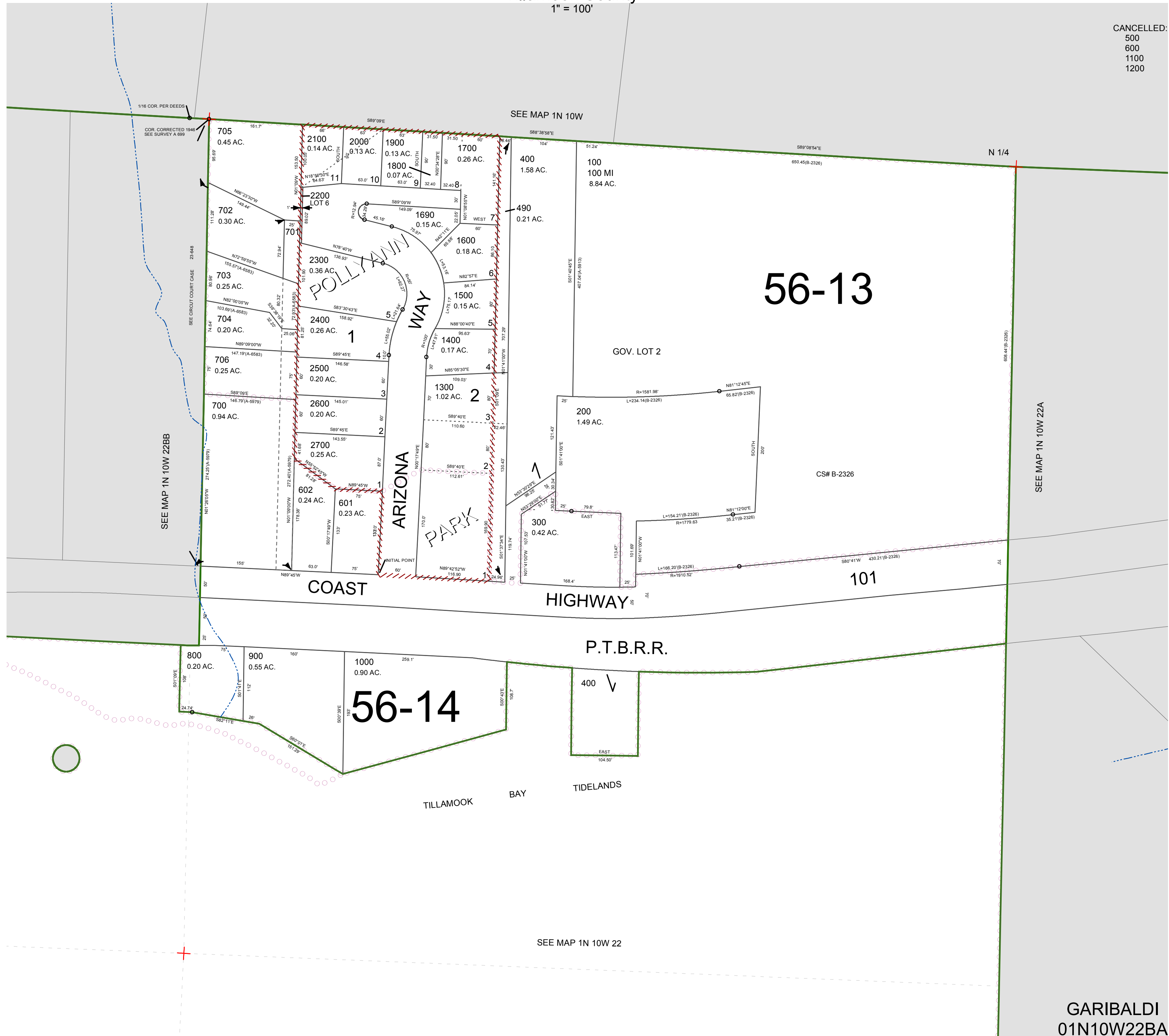
FOR ASSESSMENT AND TAXATION ONLY, NOT SUITABLE FOR LEGAL, ENGINEERING, OR SURVEY PURPOSES

N.E. 1/4 N.W. 1/4 SEC. 22 T. 1N. R. 10W. W.M.  
Tillamook County

1" = 100'

01N10W22BA  
GARIBALDI

CANCELLED:  
500  
600  
1100  
1200



SEE MAP 1N 10W 22A

SEE MAP 1N 10W 22

GARIBALDI  
01N10W22BA  
REVISED 2/17/17, WS