

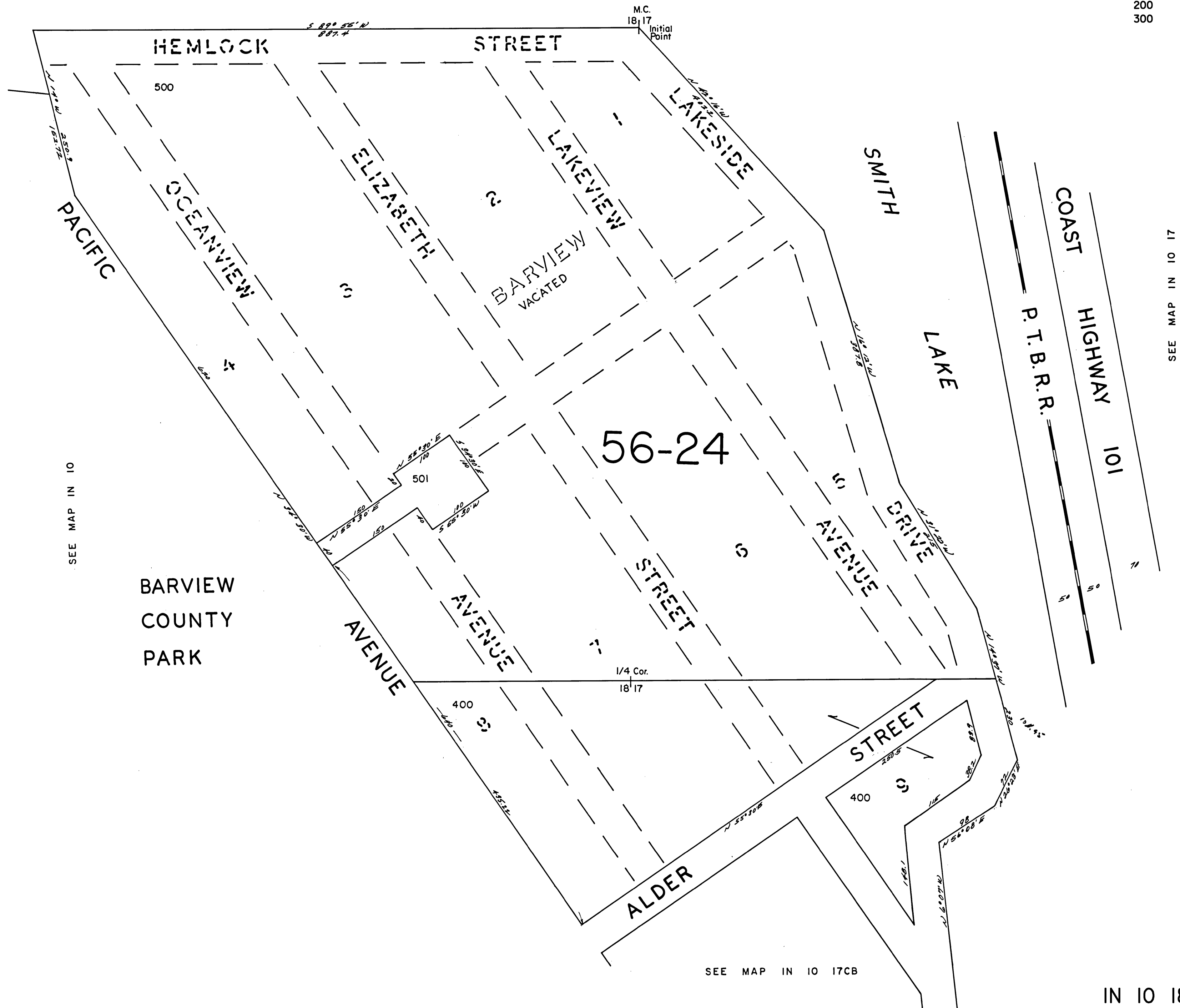
THIS MAP WAS PREPARED FOR
ASSESSMENT PURPOSE ONLY

SE1/4 NE1/4 SEC.18 T.1N. R.10W. W.M.
TILLAMOOK COUNTY

IN 10 18AD
BARVIEW

CANCELLED NO.
100
200
300

1" = 100'
SEE MAP IN 10



SEE MAP IN 10 17CB

IN 10 18AD
BARVIEW

REVISED 2-8-99, GW