

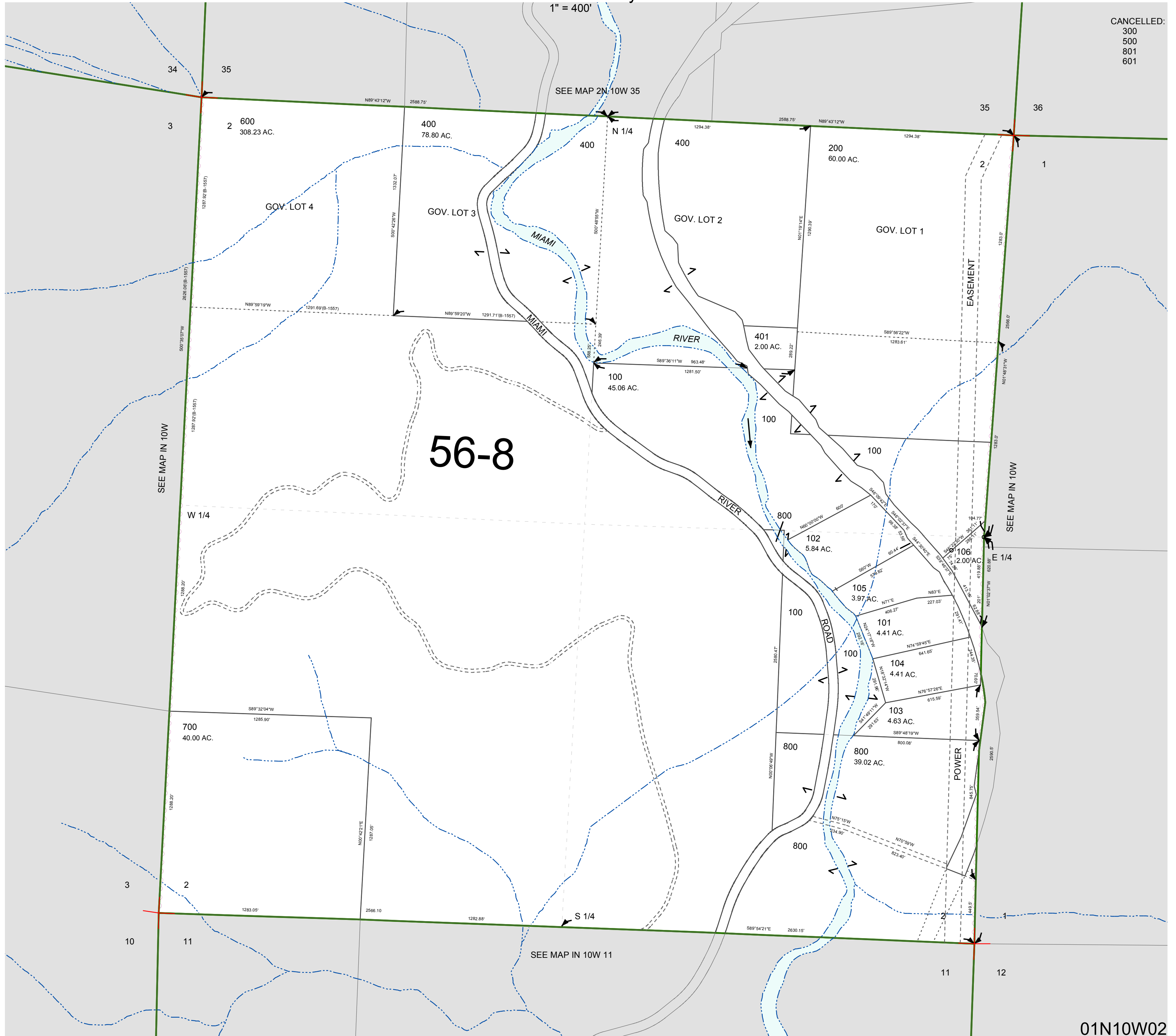
FOR ASSESSMENT AND TAXATION ONLY, NOT SUITABLE FOR LEGAL, ENGINEERING, OR SURVEY PURPOSES

SECTION 2 T.1N. R.10W. W.M.
Tillamook County

01N10W02

CANCELLED:
300
500
801
601

1" = 400'



56-8

SEE MAP 2N 10W 35

SEE MAP IN 10W

SEE MAP IN 10W

SEE MAP IN 10W 11

01N10W02
REVISED 5/1/15, WS